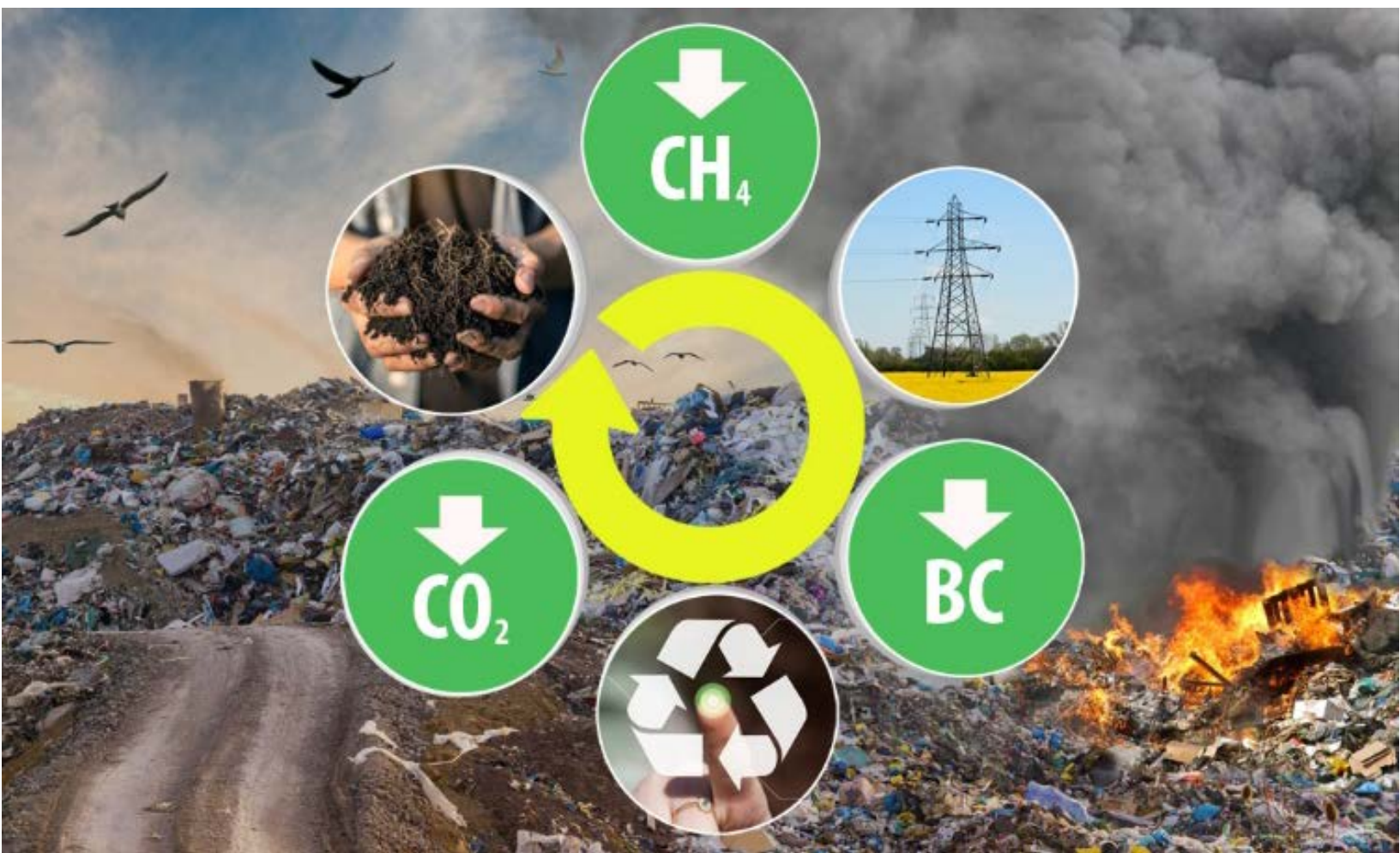


## User's Manual

# Emission Quantification Tool (EQT) for Estimating Short Lived Climate Pollutants (SLCPs) and Other Greenhouse Gases (GHGs) from Waste Sector



Prepared by:

Institute for Global Environmental Strategies (IGES)

Prepared on behalf:

Climate and Clean Air Coalition (CCAC) Initiative



## **Executive Summary**

Emission Quantification Tool (EQT) developed by the Institute for Global Environmental Strategies (IGES) on behalf of the Climate and Clean Air Coalition's Municipal Solid Waste Initiative (CCAC-MSWI), which has been designed to support a rapid assessment of greenhouse gases (GHGs) and short lived climate pollutants (SLCPs) (i.e., black carbon) associated with solid waste management. Specifically intended for policymakers and practitioners engaged in the municipal solid waste sector, the tool enables users to conduct a baseline estimation of selected emissions that can be measured against several proposed scenarios aimed at guiding the identification of climate friendly waste management options and alternatives for acity/country

This is the version II of the EQT, which follows a life cycle assessment (LCA) approach to account for both actual and projected waste related emissions. As such the tool is customised for estimating direct and indirect GHG and SLCP emissions, including potential emissions avoidance/savings (for example through resource recovery from waste) and net emissions considering all the phases of life cycle of waste management. The tool is both practical and user-friendly: presented in a spreadsheet format, it provides step-by-step instructions on how to enter data and obtain results, utilising either country/regional specific data or indicated default values. Moreover, the EQT is equipped to cover the full range of waste treatment approaches employed in both developed and developing countries, including those related to waste collection and transportation, biological treatment methods such as composting, anaerobic digestion (AD), recycling and material recovery, incineration (with and without energy recovery), and mechanical biological treatment (MBT), through to different final disposal methods, open burning and landfill fires.

The basic functional unit for the estimation of emissions is "kg of emissions per tonne of waste". Data results associated with business-as-usual and alternative scenarios are also disaggregated for each pollutant (CH<sub>4</sub>, BC, CO<sub>2</sub>, N<sub>2</sub>O) and presented per gas with respect to the specific treatment method being examined. Net climate impact displayed in terms of CO<sub>2</sub> equivalent values per tonne of waste. It is important to note that because the global warming potential (GWP) of BC has yet to be officially determined, and therefore, net BC emissions are estimated and presented separately. In the summary sheet, net GHG and SLCP emissions are summarised both with respect to individual treatment methods and various analysed scenarios. The tool also provides the choice of modifying the basic functional unit and estimating the emissions according to the user's preferred criteria. Lastly, BC and other GHGs emissions from BAU practice and alternative scenarios have been displayed graphically for easy comparison.

Version II of the EQT builds upon the successful application of the tool's initial prototype and we welcome feedback from users for its continued improvement. All rights are reserved. Sources must be clearly identified when this calculation sheet is reproduced or transmitted in any form or by any means.

**Note to User:** All feedback should be sent to Dr. Nirmala Menikpura ([nirmala.menikpura@mx.iges.or.jp](mailto:nirmala.menikpura@mx.iges.or.jp); [samanthinir@yahoo.co.in](mailto:samanthinir@yahoo.co.in)), Dr. Dickella Gamaralalage Jagath Premakumara ([premakumara@iges.or.jp](mailto:premakumara@iges.or.jp)).

**Financial Support:** Climate and Clean Air Coalition (CCAC) Initiative

**Developer:** Nirmala Menikpura, PhD

**Programme Manager:** Dickella Gamaralalage Jagath Premakumara, PhD

Sustainable Consumption and Production (SCP) Area

Institute for Global Environmental Strategies (IGES),

Kamiyamaguchi, Hayama, Kanagawa, Japan

Contact: [samanthinir@yahoo.co.in](mailto:samanthinir@yahoo.co.in), [nirmala.menikpura@mx.iges.or.jp](mailto:nirmala.menikpura@mx.iges.or.jp)

Tel: +44-782-746-3936

## Table of Content

Executive Summary .....	ii
Table of Content .....	iv
List of Tables .....	v
List of Boxes .....	v
List of Figures .....	v
Glossary of Terms .....	vi
1.0 Introduction.....	1
1.1 Objectives.....	1
1.2 Basic guidelines to the users .....	2
1.2.1 Selection of number of scenario .....	2
1.2.2 Direction of data entry .....	2
1.2.3 Importance of the accuracy of data.....	3
1.2.4 Unit of measurement of BC and other GHGs in individual sheets and the summary sheet. ....	4
1.2.5 Application of the Concept of Life Cycle Assessment (LCA) .....	5
1.2.6 Use of the default values .....	6
2.0 Description of the tool .....	9
2.1 Key data sheet .....	9
2.2 Estimation of GHG/SLCP Emissions from Waste Collection and Transportation.....	14
2.3 Selection of technologies for treating separated waste fractions .....	16
2.3.1 Estimation of GHG/SLCP from Composting.....	16
2.3.2 Estimation of GHG/SLCP Emissions from Anaerobic Digestion (AD) .....	18
2.3.3 Estimation of GHG/SLCP Emissions from Recycling.....	22
2.4 Selection of technologies for treating mixed MSW .....	26
2.4.1 Estimation of GHG/SLCP Emissions from Mechanical Biological Treatment (MBT) .....	26
2.4.2 Estimation of GHG/SLCP emissions from Incineration .....	29
2.4.3 Estimation of GHG/SLCP emissions from landfilling .....	34
2.4.4. Estimation of GHG/SLCP from open burning and landfill fire .....	42
.....	43
2.4.5 Estimation of GHG/SLCP from uncollected waste.....	44
2.5 Summary of GHG/SLCP emissions.....	47
3.0 Suggestions and possible improvements .....	50
References .....	50

## List of Tables

Table 1: Default values and emission factors used in the tool.....	6
Table 2: Type of landfills/dump sites includes in the tool.....	35
Table 3: The required factors and default values for application of IPCC 2006 waste model .....	40

## List of Boxes

Box 1: Method of estimating GHG/SLCP from transportation .....	14
Box 2: Method of estimating GHG/SLCP from composting.....	17
Box 3: Method of estimating GHG/SLCP emissions from AD.....	20
Box 4: Method of estimating GHG/SLCP emissions from recycling.....	24
Box 5: Method of estimating GHG/SLCP emissions from MBT.....	28
Box 6: Method of estimating GHG/SLCP emissions from incineration .....	32
Box 7: Method of estimating GHG/SLCP emissions from landfilling/open dumping.....	37
Box 8: Method of estimating GHG/SLCP emissions from open burning/landfill fire .....	43
Box 9: Method of estimating GHG/SLCP emissions from uncollected waste.....	46

## List of Figures

Figure 1: How to allocate amount of collected waste among technologies.....	2
Figure 2: Direction of data entry.....	3
Figure 3: Hierarchical importance regarding accuracy of the data.....	4
Figure 4: GHGs/SLCPs emissions and avoidance potential via LCA concept .....	5
Figure 5: Key datasheet: Basic data section .....	10
Figure 6: Key datasheet: waste collection rate and composition section.....	12
Figure 7: Key datasheet: waste data section .....	13
Figure 8: Key datasheet: Energy consumption data .....	13
Figure 9: Print screen view of transportation sheet .....	15
Figure 10: Print screen view of composting sheet.....	18
Figure 11: Print screen view of AD sheet.....	21
Figure 12: Print screen view of Recycling sheet .....	25
Figure 13: Print screen view of MBT sheet.....	29
Figure 14: Print screen view of incineration sheet.....	34
Figure 15: Print screen view of landfill sheet (data entry).....	41
Figure 16: Print screen view of landfill sheet (the results) .....	42
Figure 17: Print screen view of open burning/landfill fire sheet .....	44
Figure 18: Print screen view of uncollected waste sheet .....	47
Figure 19: Print screen view of summary table of GHGs/SLCPs .....	49
Figure 20: Print screen view of summary sheet.....	49

## Glossary of Terms

<b>Term</b>	<b>Meaning</b>
Greenhouse gas (GHG)	Gas in an atmosphere that absorbs and emits radiation within the thermal infrared range. Major GHGs from waste management are carbon dioxide (CO <sub>2</sub> ), methane (CH <sub>4</sub> ), and nitrous dioxide (N <sub>2</sub> O).
Short Lived Climate Pollutants (SLCP)	Short-lived climate pollutants (SLCPs) are agents that have relatively short lifetime in the atmosphere - a few days to a few decades - and a warming influence on climate. The main SLCPs emissions from waste management are black carbon (BC), methane (CH <sub>4</sub> ).
Business-as-Usual (BAU)	The normal performance of standard functional operations.
Refuse Derived Fuel (RDF)	A solid fuel derived from waste, which can be used as a fuel product either in an on-site combustion facility or by a third-party user such as cement kilns or power stations.
Black Carbon (BC)	Black carbon (BC) is a major component of soot and is produced by incomplete combustion of fossil fuel and biomass
Global Warming Potential (GWP)	The global warming potential (GWP) of a gas refers to the total contribution to global warming resulting from the emission of one unit of that gas relative to one unit of the reference gas, CO <sub>2</sub> which is assigned a value of 1.
Life Cycle Assessment (LCA)	Life Cycle Assessment (LCA) is a tool/method for the systematic evaluation of the environmental aspects of a product or service system through all stages of its life cycle.
Intended scenarios	Planned or meant options for future
Composting	Composting is the breakdown of organic material such as food or garden waste in a controlled aerobic environment. Compost can be used in agriculture as a soil conditioner and as a source of nutrients.
Anaerobic Digestion (AD)	Anaerobic digestion (AD) is a collection of processes by which microorganisms break down biodegradable material in the absence of oxygen and produce biogas and bio fertilizer
Digestate	Material resulting from an anaerobic digestion process that has not undergone post-digestion separation.
Combined Heat and Power (CHP) plant	Combined heat and power (CHP) integrates the production of usable heat and power (electricity), in one single, highly efficient process.
Recycling	Recycling is the reprocessing of old materials into new products, with the aims of preventing the waste of potentially useful materials, reducing the consumption of fresh raw materials, and reducing energy usage.
Recyclability	Ability of a material to be recovered from a waste stream for conversion or reuse.
Recovery	Recovery of materials and energy from waste through either recycling the material or using incineration, anaerobic digestion or other end-treatment technologies to allow some of the energy value to be retrieved from the material through the generation of heat and power.

Mechanical Biological Treatment (MBT)	A mechanical biological treatment system is a type of waste processing facility that combines a sorting facility with a form of biological treatment.
Residual Derived Fuel (RDF)	Solid recovered fuel which is produced by shredding and dehydrating solid waste
Incineration	Incineration is a method where bulk waste can break down and disperse into the environment through air, water and ash emissions.
Efficiency of electricity recovery	Potential for recovery of energy in the form of electricity relative to the gross energy content of waste.
Managed landfill	A managed landfill is defined as having controlled placement of waste as well as having cover material, mechanical compacting, or leveling of waste.
Open dumping	Land disposal site at which solid wastes are disposed of in a manner that does not protect the environment, are susceptible to open burning, and are exposed to the elements, disease vectors, and scavengers
Landfill gas (LFG)	Landfill gas (LFG) is created when organic is degraded in the landfill. This gas consists of about 60 % of CH <sub>4</sub> and about 40% of CO <sub>2</sub> , and a small amount of non-methane organic compounds (NMOCs).
Landfill Gas (LFG) Recovery	The fraction of the LFG generation that is or can be captured by a landfill gas collection and control system. LFG recovery is calculated by multiplying the LFG generation rate by the collection system efficiency.
Degradable Organic Carbon(DOC)	Degradable organic carbon (DOC) is one of the main parameters affecting the CH <sub>4</sub> emissions from solid waste disposal
Methane generation rate constant (k)	Model constant that determines the estimated rate at which waste decays and generates LFG
Methane Correction Factor (MCF)	Adjustment to model estimates of LFG generation that accounts for the degree to which waste decays anaerobically

## **1.0 Introduction**

Greenhouse gas (GHGs) emissions from waste management activities and their contribution to climate change are a matter of critical environmental concern. Methane (CH<sub>4</sub>) is the major GHG emitted from the waste sector, and open dumping and landfilling has been reported as the third highest anthropogenic CH<sub>4</sub> emission source. Short Lived Climate Pollutants (SLCPs) such as black carbon (BC) emissions from open burning of waste which is practiced in many cities in developing countries, present another urgent issue. In addition, other GHGs emissions (e.g. CO<sub>2</sub>, N<sub>2</sub>O) from waste handling, transportation and operation of machinery are also significant, especially due to the utilisation of fossil-fuel based energy. Unfortunately, local authorities responsible for waste management often do not have a clear understanding about the significance on climate change of climate pollutants resulting from their current waste management.

Cities need to undertake a rapid assessment of their present waste management situation and identify suitable alternative solutions from a climate perspective. However, quantification of GHGs and SLCPs emissions from waste management is quite difficult for personnel in local authorities since they are not familiar with the complex computations that are required to quantify climate impact from waste management. This emission quantification tool was developed in order to quantify the Short Lived Climate Pollutants (SLCP), and other greenhouse gases, from waste management treatment methods in cities. This is the version II of emission quantification tool, which has more technology coverage and has enhanced the user friendliness.

## **1.1 Objectives**

The aim of this tool is to develop decision-making guide towards undertaking a rapid assessment of current emissions resulting (business-as-usual-BAU) from waste management and identify suitable alternative solutions(s) from an emissions reduction perspective. By using this tool, cities will be able to compare emissions from their BAU scenario with alternative solutions to better understand appropriate sets of waste management practices, which align with their local context, in terms of reducing GHGs and SLCPs.

Once policy makers select and implement the most appropriate climate friendly waste management scenario for the city, monitoring should be conducted periodically (on a monthly or yearly basis) in order to track the reduction of SLCPs and GHGs emissions. For this purpose, a separate monitoring and reporting module will be developed as a part of the package to monitor the emissions reductions over time from the city's selected waste management option.



## 1.2 Basic guidelines to the users

### 1.2.1 Selection of number of scenario

This tool can be used to compare up to five waste management scenarios. Users should decide the number of scenarios that they would like to compare with BAU practice. Data entry should be limited only to the number of scenarios chosen and entries should be left blank in other scenarios.

If city is interested in pursuing more climate friendly options, instead of primary disposal methods currently being practiced, alternative waste management options can be selected in line with specific waste characteristics, financial and technical capacity of the city. In this regard, the total amount of waste utilised in each scenario (e.g. total amount of collected waste from the city) should be the same. As an example, Figure 1 shows how to allocate the collected waste among different technologies in BAU and Scenario 1. Similarly, users can compare up to 4 intended scenarios with BAU practice.

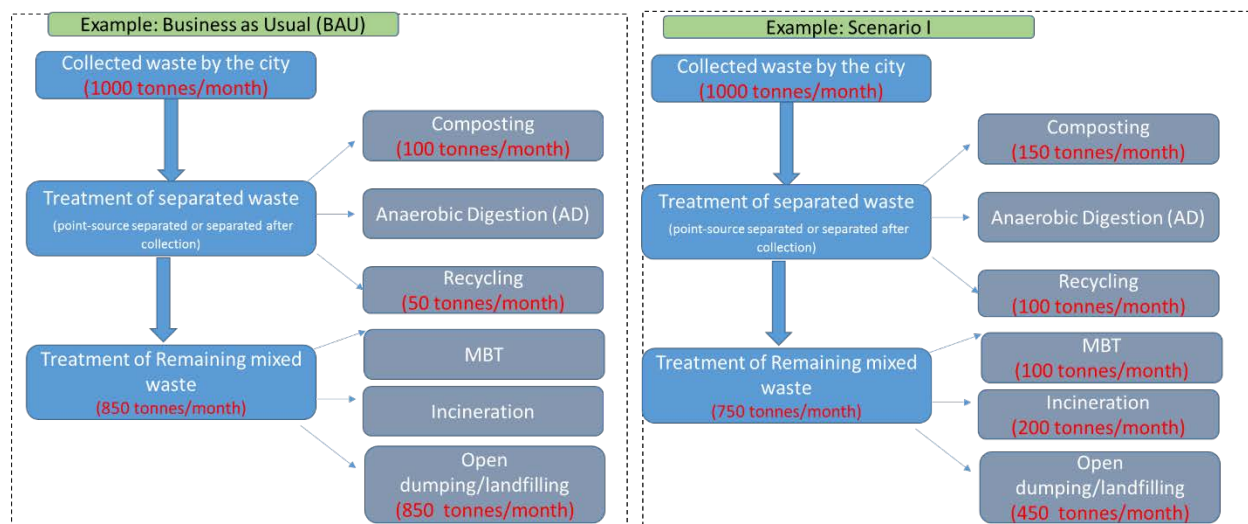


Figure 1: How to allocate amount of collected waste among technologies

In order to compare potential improvements brought by specific management practices (e.g. higher waste collection rate) in terms of GHGs/SLCPs emissions reductions, the user can enter a higher rate of waste collection in the intended scenario and allocate the corresponding waste amount among the selected technologies. The generated results will demonstrate the degree to which an improved rate of waste collection would contribute to climate change mitigation.

### 1.2.2 Direction of data entry

The tool consists of a number of worksheets and users are asked to enter the required data in every sheet. User must enter the data in every cell that is coloured in green in every sheet and should not try to enter any data in the cells which are coloured in blue and black. The tool has the ability to estimate GHGs/SLCPs emissions from integrated waste management systems in which several

technologies may exist. Therefore, users should follow the direction of data entry with respect to different technologies as shown in Figure 2 (left to right). It should be noted that the flow of data entry would play an important role in accurate estimation of the emissions from BAU practice and other intended scenarios. In the absence of one or several technologies in the preferred scenarios, data entry should not be done on those sheets and should move to the next available technology. Soon after completing technology-specific data entry for individual sheets, a results table will appear on the same page. Once the user enters all the required data with respect to different technologies in BAU and intended scenarios, the overall results will be displayed in the summary sheet.

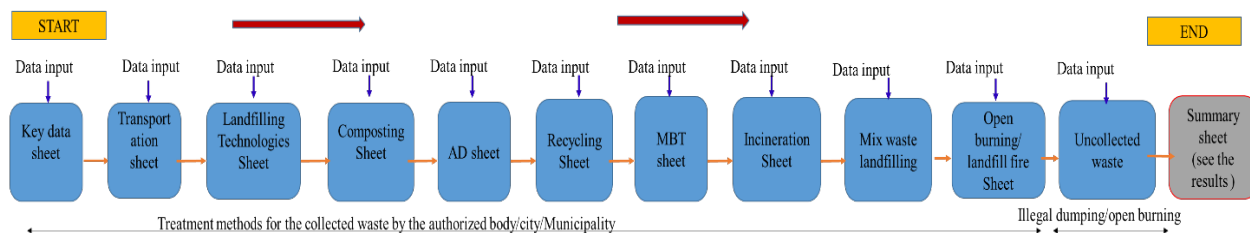


Figure 2: Direction of data entry

### 1.2.3 Importance of the accuracy of data

In order to perform a more accurate estimation, users should have a general understanding of the importance of the different type of data which is required for estimating emissions from their waste management systems. Users should pay specific attention to collecting important data such as composition of generated and collected waste as accurately as possible. Waste composition data would be the main factor that significantly influences the accuracy of the final estimated emissions from BAU and intended scenarios. Therefore, it is desirable to use location-specific composition data whenever possible rather than using the default composition data provided in the tool.

The amount of different fractions of waste utilised for the treatment options would significantly change the final results. For instance, if a city plans to use the organic fraction of waste for composting or Anaerobic Digestion (AD), emissions reduction would be more significant than if the same amount of waste was disposed in a landfill.

Furthermore, users are encouraged to collect accurate data on resource recovery. From an LCA perspective, possible avoidance of emissions depend entirely on the accuracy of resource recovery data. Users are thus encouraged to collect country/location specific resource recovery data from the chosen technologies rather than using the default values provided by the developer.

Impact from waste transportation has the lowest impact on overall results. Transportation emissions only contribute 5-6% of the total emissions from waste management due to combustion of fossil fuel. The illustration below (see Figure 3) shows the importance of accuracy with regard to different types of data.

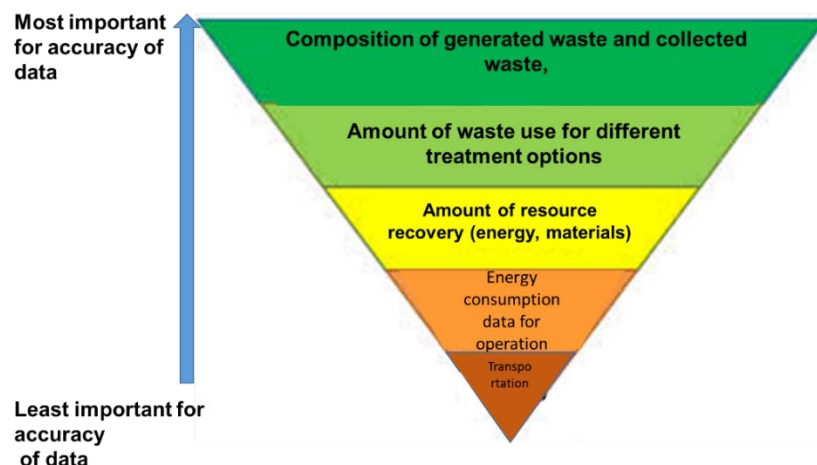


Figure 3: Hierarchical importance regarding accuracy of the data

#### 1.2.4 Unit of measurement of BC and other GHGs in individual sheets and the summary sheet.

Users should pay careful attention to the ‘unit of measurement’ in terms of BC and other GHGs in the tool for optimal understanding of the results and to make appropriate decisions on selecting climate friendly waste management systems for the city in question. In the results table of the individual technology, SLCPs (e.g. BC, CH<sub>4</sub>) and other GHGs (CO<sub>2</sub> and N<sub>2</sub>O) emissions have been estimated as “kg per tonne of waste”. The unit ‘kg’ has been used in order to show the magnitude of small amount of emissions over different phases of the life cycle. In the same table, aggregated net impact has been presented as “net BC emissions (kg/tonne of waste)” and “net GHG emissions (kg of CO<sub>2</sub>-eq/tonne of waste)”. Except BC, all emissions have been shown as CO<sub>2</sub>-eq in order to understand the aggregated effect of GHGs on climate. The user can see the graphical comparison by clicking the “Show Graph” button in each sheet. IPCC recommended global Warming Potential (GWP) 100 years values have been utilised aggregating net climate impact from different GHGs (e.g. methane biogenic CH<sub>4</sub>-28; fossil methane CH<sub>4</sub>-30; nitrous oxide N<sub>2</sub>O-265). GWP value of BC has not yet been finalised by the recognized body (e.g. IPCC) and therefore, net BC emissions have been shown in a separate line.

In the summary worksheet, net emissions of BC, CH<sub>4</sub>, CO<sub>2</sub> and N<sub>2</sub>O are shown as kg of emissions per tonne of treated waste under different technologies and for the uncollected waste. To measure the accumulated emissions from each scenario, an option has given to the user to change the unit of measurements based on their preferences. Therefore, the tool facilitate to measure the climate impact of each scenario for four types of functional units given below.

1. Emissions per tonne of generate waste
2. Emissions per tonne of collected waste
3. Emissions from yearly generated waste
4. Emissions from yearly collected waste

User can change the functional unit in the dropdown list and estimate the emissions for any of the unit listed above based on their interest and effectiveness for policy making process.

If estimated net GHGs or net BC emissions retain a positive value (indicating that the scenario is still contributing to climate impact), this suggests that further improvements are needed for mitigating GHGs/SLCPs emissions. If the result is a net negative emission value, it indicates potential GHGs/ SLCPs savings from a particular scenario and the possibility to serve as a carbon sink. Further, net BC and GHGs emissions from individual treatment methods have been shown graphically for an easy comparison of different scenarios.

### 1.2.5 Application of the Concept of Life Cycle Assessment (LCA)

This tool has been developed based on the concept of Life Cycle Assessment (LCA) as its basis. LCA is a methodical approach for quantifying GHGs/SLCPs emissions with consideration all the phases of the life-cycle such as transportation, operation (pre-processing, treatment) and disposal. All waste treatment methods emit a considerable amount of direct GHGs/SLCPs from waste transportation, operational activities and during waste treatment, as seen in Figure 4. By adapting more appropriate treatment methods, a significant amount of materials and energy can be recovered from waste. These recovered resources can replace an equivalent amount of materials and energy that would otherwise need to be produced from virgin resources. Therefore GHGs/SLCPs emissions from those virgin production processes can be avoided (see Figure 4).

GHG/SLCP emissions from improved technologies can be considerably lower than savings potential via both materials and energy recovery. The overall climate impacts (net GHG/SLCP emissions) from particular technologies is estimated as shown below.

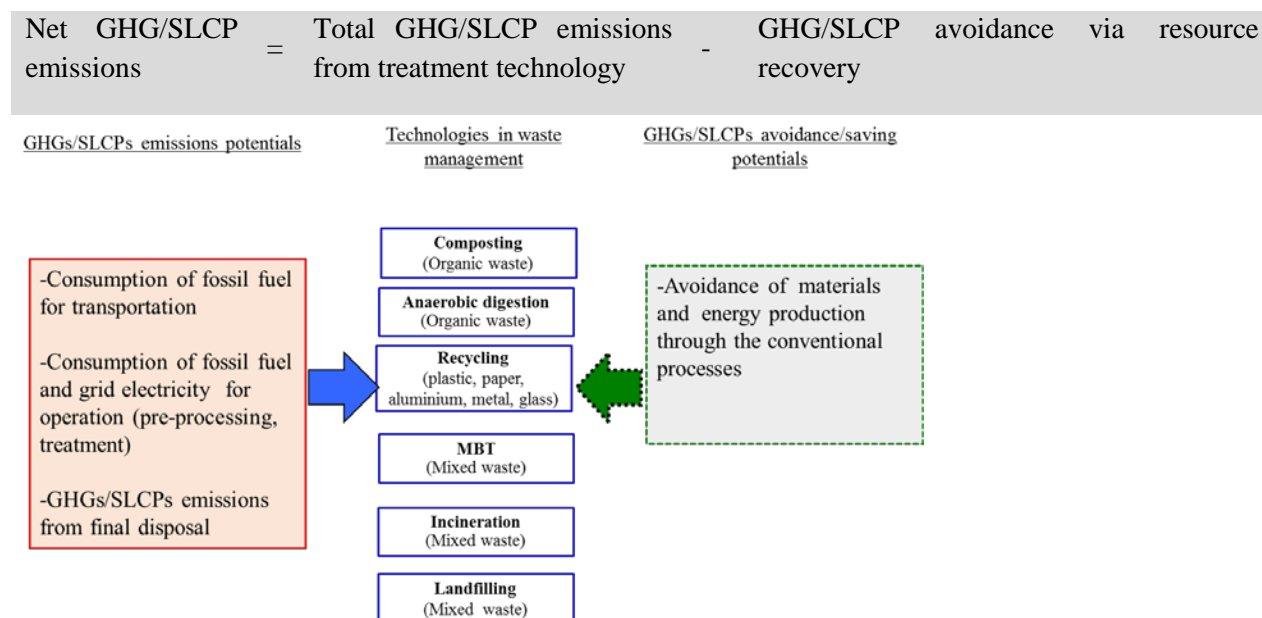


Figure 4: GHGs/SLCPs emissions and avoidance potential via LCA concept

### 1.2.6 Use of the default values

In using this tool, a considerable amount of data is required to quantify GHGs/SLCPs emissions. Users are always encouraged to gather location specific data for more accurate estimation. However, some cities may not have the detailed information required for such calculations. Therefore, default data has been provided by the developer based on available information in the literature. The types of default values provided in each sheet and the reference sources are provided in Table 1 below.

Table 1: Default values and emission factors used in the tool

Name of the sheet	Description of the default value	Reference source
Key data sheet	Climatic zones of the countries are defined based on IPCC waste model, (1) Moist and Wet Tropical = Mean Annual Precipitation (MAP) $\geq 1000$ mm , Mean Annual Temperature (MAT) $>20^{\circ}\text{C}$ (ii) Dry Tropical = Mean Annual Precipitation (MAP) $< 1000$ mm, Mean Annual Temperature (MAT) $>20^{\circ}\text{C}$ (iii) Dry Temperate = Mean Annual Precipitation (MAP)/Potential Evapotranspiration (PET) $<1$ , Mean Annual Temperature (MAT) $0-20^{\circ}\text{C}$ (iv) Wet Temperate = Mean Annual Precipitation (MAP)/Potential Evapotranspiration (PET) $>1$ , Mean Annual Temperature (MAT) $0-20^{\circ}\text{C}$	IPCC, 2014
	Economic level of the countries (1) Lower-income -Gross National Income (GNI) per capita- \$1,045 or less, (2) Lower-middle-income GNI per capita \$1,045-\$4,125 (3) Lower-middle-income GNI per capita \$4,125-\$12,746 (4) High income- GNI per capita \$12,746 or more	The World Bank, 2013
	Per capita waste generation rate for different economic level Lower income -0.6; Lower middle income -0.78; Upper middle income-1.16; High income-2.13 (kg/capita/day)	The World Bank, 2013
	Waste collection rate based on the development level of the country Low income countries $< 50\%$ ; Middle income countries $50-80\%$ ; High income countries $> 90\%$	The World Bank, 2012
	Waste composition data based on the region	IPCC, 2006 c
	Emission Factors for grid electricity production (The values cannot be presented here as it is a long list)	IGES, 2014; Ecometrica, 2011
	Calorific values of fossil fuel	IPCC, 2006 d Staffell, 2011

Transportation	Fossil fuel and grid electricity consumption rate at transfer station Electricity consumption – 2.5 kWh/tonne Diesel fuel consumption -0.125 L/tonne	Diaz,R. and Warith,M. 2006
	Black Carbon (BC) emission factor from different type of vehicles Both modern and older trucks-1.43 g/kg of fuel; Modern trucks -0.47 g/kg of fuel; Older trucks - 2.39 g/kg of fuel	Bond et al. 2013
	Global Warming Potential (GWP) of 100 years values have been used throughout the tool to aggregate the climate impact from different GHGs; Methane (CH <sub>4</sub> )-28; Fossil methane (CH <sub>4</sub> ) – 30; Nitrous Oxide (N <sub>2</sub> O)-265	IPCC, 2013.
Composting	Black Carbon emissions from operational activities due to fossil fuel burning	EMEP/EEA,2016
	Emission factors from waste degradation (4 kg of CH <sub>4</sub> /tonne of wet organic waste; 0.3 kg of N <sub>2</sub> O/tonne of wet organic waste )	IPCC, 2006 a
	Amount of compost production potential from organic waste (0.2-0.3 tonnes/tonne of organic waste)	Rx3 rethink recycle remake, 2012
	Potential replacement of chemical fertilizer from compost (N fertilizer-7.1; P <sub>2</sub> O <sub>5</sub> -4.1; K <sub>2</sub> O-5.4 kg/tonne of compost)	Bovea, et al., 2010; Patyk, 1996
	Emissions factors of chemical fertilizer production	Kool et al., 2012
AD	Average fuel consumption for handling of waste (operational activities) at AD facility (1.6L of diesel/tonne of organic waste)	Møller et al., 2009
	Emission factors from waste degradation (1 kg of CH <sub>4</sub> /tonne of wet organic waste)	IPCC, 2006 a
	Theoretical electricity recovery (35% efficiency) and heat recovery (50%) potentials from AD	WRAP, 2009
	Theoretical biogas production potential (140 m <sup>3</sup> /tonne of organic waste) from AD.	WRAP, 2009
	Calorific value of methane (37MJ/m <sup>3</sup> ) and methane content of the biogas from AD (60%)	UNFCCC, 2006.
	Recovery of solid digested (compost) from AD process (0.2 tonnes/tonne of organic waste)	Ostrem, 2004
	Fossil energy requirement for paper and cardboard recycling and related emissions	EMEP/EEA, 2016
	Grid electricity consumption for plastic recycling and fossil fuel requirement for virgin plastic production.	UNFCCC, 2012
	Fossil energy requirement and related emissions from recycling of aluminium scraps	European Aluminium Industry, 2013.
	Fossil fuel consumption and related emissions from virgin aluminium ingot production	World Aluminium Industry, 2010

Recycling	Fossil fuel and grid electricity requirement for recycling of metal/steel scraps and virgin production of metals.	World Steel Association, 2011
	Total thermal energy requirement for glass recycling and virgin production and related emissions	EMEP/EEA, 2016
	Recyclability of different type of materials (Actual amount of materials that can recovered per tonne of recyclables) Paper-90%; Plastic-90%; Aluminium-75%; Steel-90%; Glass-95%	Menikpura et al., 2012
MBT	Emission factor from waste degradation in MBT piles (4 kg of CH <sub>4</sub> /tonne of wet organic waste; 0.3 kg of N <sub>2</sub> O/tonne of wet organic waste )	IPCC, 2006 a
	Energy consumption for operational activities at MBT plant (Diesel-3.5L/tonne of waste, Electricity- 0.2 kWh/tonne of waste)	Phitsanulok Municipality, 2012
	Energy requirement for RDF production (Diesel-0.64 L/tonne of RDF; Electricity- 207.5 kWh/tonne of RDF)	Arena et al., 2003
	Crude oil production potential from waste plastic (600L/tonne of waste plastic)	Warinchamrap Municipality, 2012
Incineration	Energy consumption for operation activities (grid electricity 66.8 kWh/tonne), fossil fuel consumption for initial combustion (0.01Ldiesel/tonne)	Cherubini et al., 2008
	Efficiencies of electricity and heat recovery from incineration plants (i) For electricity: Average efficiency 15-30% (Part of generated electricity is utilised for on-site activities, which amounts to 20-50%) (ii) For heat: Average efficiency of heat recovery is 80-90% (for only heat recovery option). (iii) For heat and power : Average electricity efficiency 15% and heat efficiency 50-60% Note: In developing countries only electricity production can be assumed with an average electrical efficiency 20%.	DEFRA, 2013; Astrup et al., 2009
	Default values for CH <sub>4</sub> and N <sub>2</sub> O emissions from different type of incinerators CH <sub>4</sub> and N <sub>2</sub> O emissions from different type of incinerators in waste combustion: (i) Continuous-stoker 0.2 g CH <sub>4</sub> and 47 g N <sub>2</sub> O; (ii) Continuous-fluidised bed 0 g CH <sub>4</sub> and 67 g N <sub>2</sub> O; (iii) Semi-continuous-stoker 6g CH <sub>4</sub> and 41g N <sub>2</sub> O; (iv) Semi-continuous-fluidised bed 188 g CH <sub>4</sub> and 68 g N <sub>2</sub> O per tonne of wet waste	IPCC, 2006 b
	BC emission factor from incineration is 0.322kg/tonne of waste	EMEP/EEA, 2016
	Dry matter content, total carbon, fossil carbon and degradable organic carbon (DOC) in different fraction of waste, oxidation factor in percentage of carbon input	IPCC, 2006 b

	Calorific value (Low Heating Values) of different fractions of waste. Food waste 2 MJ/kg ; Garden waste 4 MJ/kg; Plastics 31.5 MJ/kg; Paper 11.5 MJ/kg; Textile 14.6 MJ/kg; Leather/rubber 14.6 MJ/kg; Glass 0 MJ/kg; Metal 0 MJ/kg; Nappies/Diapers 5 MJ/kg; Wood 15 MJ/kg.(the weight is in wet basis)	IFEU,2009
Landfilling	Fossil fuel consumption for operational activities (e.g. for operation of machineries (bulldozers, backhoes etc.) (0.8L per tonne of landfilled waste). Grid electricity consumption for operational activities (e.g. for running engines for leachate management) ( 0.1 kWh per tonne of sanitary landfilled waste)	Mendes et al., 2004
	Default values required to use IPCC waste model: Degradable Organic Carbon (DOC), Fraction of DOC decomposing under Anaerobic condition (DOCf), Methane generation rate constant (k), Methane Oxidation on Landfill cover (OX), Methane Correction Factor (MCF) for the landfill/open dumpsite	IPCC, 2006 a
	Density of CH <sub>4</sub> (0.716 kg/m <sup>3</sup> ); Percentage of CH <sub>4</sub> in LFG (60%); Energy content of CH <sub>4</sub> (37MJ/m <sup>3</sup> ), electricity production efficiency of IC engine (35%)	UNFCCC, 2006. IPCC, 2006 a
Uncollected waste	BC emissions from open burning of uncollected waste (0.65 kg BC/tonne of waste)	Bond et al. 2013
	Emission factor for calculation fossil CO <sub>2</sub> from open burning (e.g. dry matter content, total carbon, fossil carbon and degradable organic carbon (DOC) in different fraction of waste, oxidation factor (58%) in percentage of carbon input)	IPCC, 2006 a

## 2.0 Description of the tool

This tool consists of 12 major worksheets. The very first sheet of the tool is the “Home” page which has been designed to present brief background, objectives, key data requirement and contact information of the developer.

The second sheet is the key data sheet, in which user should apply the general data related to waste management. After that technology specific data should be entered in individual sheet related to each technology. Once user enter all the data related to chosen technological options, compiled results will appear in the summary sheet. Further, there is a sheet so called “user guide”, in which background information and data has been shown which utilize for emissions estimations.

### 2.1 Key data sheet

Key data sheet has been designed to input three sets of data namely: general data, waste data and energy data. This data is necessary for estimation of GHG/SLCP from all technologies.



*General data:* This part of the sheet has been designed for user to input location/country-specific background data which are related to the waste management such as location of the country, climatic zone, and population of the city, economic level, and waste generation data, etc., as seen in Figure 5. User help buttons have been provided for users to understand the exact information required and then to input the most reliable and accurate data. For instance, for waste generation data, users can choose the options to either enter location-specific data or use the theoretical estimation provided (default value) by the developer based on per-capita waste generation rate and the population. If the user choose the option “default generation rate”, calculation can be continued without entering actual waste generation data in cell G24. Waste generation data is the key figure which effects the total climate impact from the city and therefore accuracy of such data is crucial.

Note to user: In order to access user 'Help' options in the tool, users must enable macros.

Print sheet

Decision Making Tool- Version II- Feb 2018  
Excel 2013 has been used to develop the tool

**Basic data**

Select your country from the list of CCAC member countries: Philippines

Select the global region where your country is located: Southeast Asia

Write the name of the city: Philippines

Select the climatic zone of your country/province: Moist and Wet Tropical

Enter the population of the city: 100,000,000

Select the economic level of the country: Lower middle income

Select the source for waste generation data: Country/location specific

Total waste generation (tonnes/day) in the city at percent

Theoretical (default generation rate)	Type Actual Amount
61662	Help

Figure 5: Key datasheet: Basic data section

*Waste data:* The basic data related to waste management is the waste collection rates (e.g. collection rate by the city, informal sector and uncollected waste). These figures should be provided as accurately as possible because the total amount of waste treated by the city, total amount of waste treated by informal sector and the total uncollected waste amount will be derived based on the input data in this table and rate of waste generation.

In addition, composition of the generated and collected waste should be provided as accurately as possible since this data is critically important for the accuracy of the final result. These are the options that users can follow to enter the compositions data.

Option I- Users are always encouraged to use country/location specific composition data for more accurate estimation. If location specific data is available, users are advised to enter specific generated and collected waste composition data (as a percentage %) in the green cell. If the city dispose all the collected waste at the landfill, and if the composition of waste at the landfill is known, then such composition data can be considered as the composition of collected waste. Further, if the city has similar generated and collected waste compositions, once data is entered in “generated waste composition”, it can be copy and paste in collected waste composition column. See Figure 6.

Option II - In the absence of country/location specific data, the user select 'default value' and then IPCC default values will be considered as both generated and collected waste compositions. The percentage given may not add up to 100% due to partly incomplete composition data. When the total is not 100%, or somewhat deviated from the city composition data, user can adjust the composition by clicking 'Adjust composition' button in F42 cell. It will direct user to IPCC composition data table and user can change the percentages in corresponding region to bring the waste composition into more realistic figures.

Option III - If the user know the composition of collected waste and uncollected waste, tool will support to derive the composition of generated waste. Click 'derive composition' button and follow the instructions given in the “user guide page” see in Figure 6. In order to derive the composition of generated waste, user must know the composition of collected waste, and uncollected waste. Then the derived 'generated composition' data can be copied and pasted back into 'generated waste composition' cells in key data sheet. Also user can copy and paste the “composition of collected waste” that has been entered in user guide page, back into the 'collected waste composition' cells in key data sheet, without re-entering same data.

The next step is to enter the amount of waste aimed to be treated under different scenarios. Using this tool, users can compare BAU practice with four possible intended (future) scenarios. Users should decide the number of scenarios that they would like to compare with BAU practice. The amount of waste collection in each scenario will appear automatically based on the input data provided on the waste collection rate and total waste generation of the city. The user should enter the amount of the different fractions of waste (based on the available amount in the composition, technological and financial capacity of the city) that can be treated using different technologies in an individual scenario. For instance, the separated organic fractions of waste can be treated using composting and anaerobic digestion while separated recyclables can be treated with recycling. It should be noted that amount of organic waste user for composting and anaerobic digestion should not be higher than the available amount in collected waste. Therefore, user should always “check available amount” prior to enter data in this table. Similarly, amount of recyclable used in each scenario should not be higher than available amount of recyclables (plastic + paper + glass + metal). If the user enter a higher amount of organic or recyclables waste than the available amount in collected waste, an error message will be appeared. User should correct the error before moving into next cell data entry.

Collected and uncollected amount of waste

User input required in green cells\*

Part of generated waste is collected by the city (e.g. Municipality or contracted private/authorized companies) and informal collectors (e.g. waste pickers, households, voluntary organizations) with the rest being uncollected waste. Specify the collection and non-collection rates in your city as accurate as possible with respect to the number of scenarios that you would like to compare.

Help	BAU	Scenario 1	Scenario 2	Scenario 3	Scenario 4
(1) Collected amount by the city or private/authorized companies	Tonnes/day	40080	40080	40080	40080
(2) Collected amount by informal collectors (e.g. mainly the recyclables)	Tonnes/day				
(3) Uncollected amount	Tonnes/day	21582	21582	21582	21582
Total generated waste	Tonnes/day	61662	61662	61662	61662
					0

Composition of generated and collected waste

User input required in green cells\*

Please select the source for waste composition data. If location specific data is available, specific generated and collected waste composition data (as a percentage %) should be entered in the green cells. If the city does not have such data, IPCC recommended composition data for the region will be used. For more information, click "Help" Button.

Select the source for waste composition data

Help

Country/location specific

Adjust composition

Derive composition

Enter generated and collected waste composition in green cells

Components	IPCC Default waste composition (%) for Southeast Asia	County/location specific generated waste composition (%)	County/location specific collected waste composition (%)
Food waste		45.05	45.05
Garden waste		7.22	7.22
Plastics		10.56	10.56
Paper		8.61	8.61
Textile		1.61	1.61
Leather/rubber		0.44	0.44
Glass		2.34	2.34
Metal (aluminium + steel)		4.22	4.22
Nappies/diapers (disposable)		0.00	0.00
Wood			
Hazardous waste			
Others		19.95	19.95
Total	0.00	100.00	100.00

Figure 6: Key datasheet: waste collection rate and composition section

The remaining mix waste can be treated by using Mechanical Biological Treatment (MBT), incineration and landfilling/open dumping (landfilling includes all kind of landfills and legal open dumping operated by the city). The total amount of waste treated using different technologies in an individual scenario should be equal to the total amount of waste collected by the city (see Figure 7). A warning message will appeared whenever total amount of waste entered under different treatment options is lower or higher than the total collected waste amount. This will alert users so that they will understand the error and adjust the waste amount equal to the total amount of collected waste.

Utilisation of waste [ collected by the city only ] for different treatment options

User input required in green cells\*

Note to User: Using this tool, Business as Usual (BAU) practice (BAU is the current situation) can be compared against possible 4 intended (future) scenarios. Decide the number of scenarios to compare against BAU. If only one intended scenario is to be compared against BAU, enter the data under BAU and Scenario 1, leaving other scenarios empty.

Amount of MSW collected will be shown based on the waste collection rate of the city. For the comparison purposes, the same amount of collected waste in each scenario can be used with different technological options in order to determine the best climate friendly technology. Decide the type of treatment method available in BAU and intended scenarios (e.g. type of treatment option chosen for intended scenarios may depend on the technical and financial capacity of the city). Enter the amount of waste that the city plans to use for each treatment type. The waste amount entered here under different treatment options will be displayed on the individual treatment sheet.

Help

Show example

Utilization of MSW	Units	Note to User	BAU	Scenario 1	Scenario 2	Scenario 3	Scenario 4
Total collected waste by the city	Tonnes/day	Collected waste = Generated amount per day × collection rate by the city (%)	40,080	40,080	40,080	40,080	0

Step 1: Type the amount of separated waste used for the below treatment

Help

Check available amount

Composting	Tonnes/day	Total amount of organic waste (food waste and garden waste) used for		10,480	10,480	10,480	
Anaerobic digest	Tonnes/day	Total amount of organic waste (food waste and garden waste) used for					
Recycling	Tonnes/day	Total amount of cleaned recyclable (collected by municipality or contracted private/ authorized companies only)		5,160	5,160	5,160	

Total amount of remained mixed waste for final disposal	Tonnes/day	The remaining mix waste which can be treated using one or more disposal options shown below	40,080	24,440	24,440	24,440	0
---	------------	---	--------	--------	--------	--------	---

waste utilised among below disposal methods

Help

Check suitability of incineration for your city

MBT	Tonnes/day	Mix waste use for MBT					
Incineration	Tonnes/day	Mix waste use for incineration					
Landfilling/Open dumping	Tonnes/day	Total mix waste dispose at landfills or opendumps	40,080	24,440	24,440	24,440	
Total treated waste collected by the city			40,080	40,080	40,080	40,080	0

Figure 7: Key datasheet: waste data section

**Energy data:** Different types of fossil fuel and grid electricity are utilized at various stages of waste management. In order to identify the emissions from fossil fuel and grid electricity consumption, users are requested to provide country/location specific energy content of the fossil fuel and emissions factor of grid electricity production (see Figure 8). In the absence of such data, default emission factors provided by the developer can be utilised. The energy values or the emission fraction that are chosen in this section will be utilised throughout the tool for emission calculations relevant to fossil fuel and grid electricity consumption. Once all the data is entered into the key data sheet, the user can move to the next sheet to enter the technology-specific data.

Energy consumption data

User input required in green cells\*

Fossil fuel and grid electricity is utilized in various stages of waste management. If you know the country/location specific default values please enter in green cell. If you do not know, default emission factor will be utilized throughout the calculation.

(1) Emission factors for grid electricity production

Default GHG emission factor from grid electricity production in Philippines  kg CO<sub>2</sub>-eq/kWh

Type country specific/location specific GHG emission factor for grid electricity production (if available)  kg CO<sub>2</sub>-eq/kWh

(2) Calorific values of fossil fuel

Select the data source for heating values/calorific values of fossil fuel

IPCC default values will be utilized for the calculation and user should NOT enter any data in Table below.

Type of fuel	IPCC default	Country specific
	Net calorific value (MJ/L)	Net calorific value (MJ/L)
LPG	25.07	
Gasoline	35.44	
Kerosene	35.28	
Diesel	36.372	
Natural Gas	0.0333	

Figure 8: Key datasheet: Energy consumption data

## 2.2 Estimation of GHG/SLCP Emissions from Waste Collection and Transportation

MSW collection and transportation, and operational activities at transfer stations consume a significant amount of fossil fuel and grid electricity which lead to GHGs and BC emissions. The transportation sheet has been designed for quantifying emissions from the potential consumption of two types of fossil fuel as some cities may use more than one type of fossil fuel for transportation (e.g. diesel and/or natural gas). Users can choose the types of fossil fuel that are used from the drop down list. Emission factors have been given for three types of vehicles namely; modern vehicles, old vehicles, and both modern and old vehicles. Users are asked to choose the most common type of vehicle in the city. The user must then enter the data on average daily fossil fuel consumption with respect to BAU and intended scenarios. Some cities may not have daily fossil fuel consumption data for waste collection and transportation. In such situation daily fuel consumption can be approximately estimated as shown in Box I.

### Box 1: Method of estimating GHG/SLCP from transportation

(i) Total fuel consumption for waste collection and transportation;

$Fuel (units/day) = Number\ of\ vehicles \times Number\ of\ total\ trips\ per\ day\ per\ vehicle \times Average\ fuel\ efficiency\ (Units\ L\ or\ kg/trip)$

(ii) GHG emissions from waste transportation and operational activities;

$$Emissions_T = \frac{Fuel(units) \times NCV_{FF} (MJ / unit) \times EF (kg / MJ)}{AOW (tonnes / day)}$$

Emissions<sub>T</sub> – Emissions from transportation (kg GHG/tonne of waste)

Fuel (units) – Total amount of fossil fuel consumption per day, (Liters or kg (e.g. natural gas))

NCV<sub>FF</sub> – Net calorific value of the fossil fuel consumed (MJ/unit mass or volume) (e.g. Diesel 36.42 MJ/L, Natural gas 37.92 MJ/kg)

EF – CO<sub>2</sub>, CH<sub>4</sub>, N<sub>2</sub>O emission factor of fuel (e.g. diesel: 0.074 kg CO<sub>2</sub>/MJ, Natural gas: 0.056 kg CO<sub>2</sub>/MJ)

AOW- Amount of Waste Transport (tonnes/day)

(iii) BC emissions from waste transportation and operational activities at transfer station;

$$Emissions_T = \frac{Fuel(units / day) \times Density(kg / unit) \times EF (g / kg) / 1000}{AOW (tonnes / day)}$$

EF – EF of black carbon has given in g/kg (divided by 1000 to convert into kg)

(iv) GHG emissions from grid electricity consumption:

$$Emissions_E = \frac{EC \times EF_{el}}{AOW}$$

EC – Electricity consumption for operation activities at transfer station (kWh/day)

EF<sub>el</sub> – Emission factor of grid electricity production (kg CO<sub>2</sub>-eq/kWh)

AOW- Amount of Waste (tonnes/day)

(iv)-Total GHG emissions are estimated as follows:

$$NetGHG_{(CO_2-eq/tonne)} = (CO_{2(net)} \times 1 + CH_4(biogenic)_{(net)} \times 28 + CH_4(fossil)_{(net)} \times 30 + N_2O_{(net)} \times 265) / 1000$$

Net GHG emissions – Estimated as kg of CO<sub>2</sub>-eq/tonne

Some cities may have transfer stations for proper handling, sorting and management of collected waste. This sheet would thus support the quantification of emissions from the transfer stations. Users are asked to provide the total amount of waste handled at the transfer station (note that not all the waste collected by the city may reach the transfer station). In addition, data should provide on utilisation fossil fuel and grid electricity for operational activities. In the absence of such data, default values provided by the developer can be utilised. Once the data entry is done, net climate impact from BC and other GHGs will be shown in the bottom of the table. IPCC recommended GWP-100 years values have been utilised aggregating net climate impact from different GHGs (e.g. methane biogenic CH<sub>4</sub>-28; Fossil methane CH<sub>4</sub>- 30; Nitrous Oxide N<sub>2</sub>O-265). The estimation method of emissions is presented in Box 1. The results will be displayed in the same sheet in which emissions have been calculated per gas, taking into account life cycle phases. All default values and emission factors used in this calculation are listed in Table 1. The structure of the page is shown in Figure 9.

Key Data
Transportation
Go to Composting
Go to Anaerobic digestion
Go to Recycling
Go to MBT
Go to Incineration
Go to Mix waste
Open burning and landfill fill
Go to uncollected waste
Go to Summary

**GHG and SLCP emissions from waste collection and transportation**

User input is required in green cells \*

**Data Input**

	Unit	BAU	Scenario 1	Scenario 2	Scenario 3	Scenario 4
Amount of collected waste by the city	Tonnes /day	40080	40080	40080	40080	0

**(I) Fuel consumption for collection and transportation**

Type of trucks used for waste collection and transportation	Type	Help	Older trucks	Both modern and older trucks	Both modern and older trucks	Modern trucks	
Type of fuel (type I) used for collection and transportation	Type I	Help	Diesel	Diesel	Diesel	Diesel	
Total amount of fossil fuel (type I) used	L/day		50000	45000	45000	40000	
Type of fuel (type II - if city uses more than one fuel type) used for collection and transportation	Type II						
Total amount of fossil fuel (type II) used	L/day						

**(II) Energy consumption at transfer station (only if available)**

Amount of waste handled at the transfer station	Tonnes/day					
Type of fossil fuel used at the transfer station	Type					
Amount of fossil fuel used for operation at transfer station	L/day					
Amount of electricity used for operation at transfer station	kWh/day					

Clear

**Results: Summary of the emissions**

Show Graph Print sheet

Category	Type of emissions	Emissions	Emissions from waste transportation (kg/tonne)				
			BAU	Scenario 1	Scenario 2	Scenario 3	Scenario 4
SLCPs	CH <sub>4</sub>	Direct (Type I fuel )	0.00	0.00	0.00	0.00	0.00
		Direct (Type II fuel)	0.00	0.00	0.00	0.00	0.00
		Direct (fuel at transfer Station)	0.00	0.00	0.00	0.00	0.00
	Net emissions	0.00	0.00	0.00	0.00	0.00	
	BC	Direct (Type I fuel )	0.00	0.00	0.00	0.00	0.00
		Direct (Type II fuel)	0.00	0.00	0.00	0.00	0.00
Direct (fuel at transfer Station)		0.00	0.00	0.00	0.00	0.00	
Net emissions	0.00	0.00	0.00	0.00	0.00		
Other GHGs	CO <sub>2</sub>	Direct (Type I fuel )	3.36	3.03	3.03	2.69	0.00
		Direct (Type II fuel)	0.00	0.00	0.00	0.00	0.00
		Direct (fuel at transfer Station)	0.00	0.00	0.00	0.00	0.00
		Indirect (electricity at transfer Station)	0.00	0.00	0.00	0.00	0.00
	Net emissions	3.36	3.03	3.03	2.69	0.00	
	N <sub>2</sub> O	Direct (Type I fuel )	0.00	0.00	0.00	0.00	0.00
		Direct (Type II fuel)	0.00	0.00	0.00	0.00	0.00
		Direct (fuel at transfer Station)	0.00	0.00	0.00	0.00	0.00
		Net emissions	0.00	0.00	0.00	0.00	0.00
Net BC emissions (kg of BC/tonne)			0.00	0.00	0.00	0.00	0.00
Net climate impact of GHGs (kg/tonne)			3.41	3.07	3.07	2.73	0.00

Figure 9: Print screen view of transportation sheet

## **2.3 Selection of technologies for treating separated waste fractions**

Part of organic waste and/or recyclables are separated at the household level or at material recovery facilities. The separated organic waste can be treated using composting and AD technologies while the separated recyclables can be recycled for recovery of materials. In this tool, separate sheets have been designed for the above technologies to quantify the emissions from separated organic waste and recyclables. Users should provide technology-specific data in those individual sheets if they have chosen any of those technologies in BAU or intended scenarios. The detailed specifications of composting, AD and recycling sheets are described in the sections below.

### **2.3.1 Estimation of GHG/SLCP from Composting**

The separated organic waste (at the household level or at the resource recovery facility in the city) can be utilised for composting. Amongst organic waste utilisation technologies, most cities have shown an interest in composting technologies as they are simple, easy to manage and comprise a low-cost option for waste management.

There are two major ways that composting can emit GHG/SLCP: i) GHG and BC emissions from utilisation of fossil energy (e.g. grid electricity and diesel) for various operational activities at composting facility; and ii) GHG emissions from organic waste degradation during the composting process.

As far as GHG emissions from organic waste degradation is concerned, a large fraction of the degradable organic carbon in the waste material is converted into CO<sub>2</sub>. These CO<sub>2</sub> emissions have biogenic origin and would not be taken into account for GHG calculations. CH<sub>4</sub> can be formed due to anaerobic degradation of waste in deep layers of composting piles. However, such CH<sub>4</sub> is oxidised to a large extent in the aerobic sections of the compost piles. Composting can also produce N<sub>2</sub>O in minor concentrations. In this study, average default emission factors recommended by IPCC (e.g. 4 kg CH<sub>4</sub>/tonne of organic waste in wet basis and 0.3 kg N<sub>2</sub>O/tonne of organic waste in wet basis) were used to quantify the GHG emissions from composting (IPCC, 2006 a).

At the end of the composting process, there is a potential for producing a significant amount of marketable compost (200-300 kg/tonne of organic waste) (Rx3 rethink recycle remake, 2012). The produced compost can be used for agricultural purposes as a substitute for conventional fertilizer. Utilisation of compost has been credited for avoiding emissions from production of chemical fertilizer. However, in practice, this co-benefit should not be included in the calculation if farmers do not decrease the use of chemical fertilizer after application of compost.

## Box 2: Method of estimating GHG/SLCP from composting

(i) GHG/SLCP emissions from operational activities

$$Emissions_{GHG(i)-Operation} = \frac{Fuel(unit / day) \times NCV(MJ / unit) \times EF(kg / MJ) + EC \times EF_{el}}{AOW(tonnes / day)}$$

Emissions<sub>GHG(i)-operation</sub> – Emissions i<sup>th</sup> GHG (e.g. CO<sub>2</sub>, CH<sub>4</sub>, N<sub>2</sub>O) from operational activities

Fuel (unit/day) – Total amount of fossil fuel units (kg or L) consumption per day

NCV<sub>FF</sub> – Net calorific value of the fossil fuel consumed

EF – CO<sub>2</sub>, CH<sub>4</sub>, N<sub>2</sub>O emission factor of the fuel (e.g. diesel: 0.074 kg CO<sub>2</sub>/MJ)

EC- Electricity consumption for operation activities (kWh/day)

EF<sub>el</sub>–Emission factor of grid electricity production (kg CO<sub>2</sub>-eq/kWh)

AOW-Amount of Waste use for composting (tonnes/day)

(ii) SLCP (e.g. BC) emissions from operational activities

$$Emissions_{BC-Operation} = \frac{Fuel(unit / day) \times NCV(MJ / unit) \times EF(g / MJ) / 1000}{AOW(tonnes / day)}$$

EF – EF of black carbon has given in g/MJ (divided by 1000 to convert into kg)

(iii) GHG emission from waste degradation

GHG emissions from waste degradation are calculated as follows:

$$Emission_{GHG(i)-Degradation} = EF(kg / tonne)$$

EF – Emissions of CH<sub>4</sub> and N<sub>2</sub>O from organic waste degradation (kg/tonne of organic waste)

(iv) Total i<sup>th</sup> GHG emissions from composting is calculated as follows:

$$TotalGHG_{(i)} = Emissions_{Operation} + Emission_{Degradation}$$

(v) Avoided GHG emissions by replacing chemical fertilizer are calculated as follows:

$$AvoidedGHG_{(i)} = AC \times PC_{Agriculture} \times A_{GHG}$$

AvoidedGHG<sub>(i)</sub>– Avoided i<sup>th</sup>GHG from composting due to avoidance of chemical fertilizer production (kg/tonne)

AC – Amount of Compost produced (tonne of compost/tonne of waste)

PC<sub>Agriculture</sub> – Percentage of Compost use for agricultural and gardening purpose (%)

A<sub>GHG(i)</sub> – i<sup>th</sup> GHG Avoidance potential from chemical fertilizer production which is equivalent to one tonne of compost (kg/tonne of compost)

(vi) Net i<sup>th</sup> GHG emissions and net BC emissions can be calculated as follows:

$$Net(GHG)_{(i)} = Total(GHG)_{(i)} - Avoided(GHG)_{(i)} ; Net(BC) = Total(BC) - Avoided(BC)$$

(vii) Net climate impact from all GHG is estimated as follow;

$$NetGHG_{(CO_2-eq/tonne)} = CO_{2(net)} \times 1 + CH_4(biogenic)_{(net)} \times 28 + CH_4(fossil)_{(net)} \times 30 + N_2O_{(net)} \times 265$$

Net GHG emissions – Estimated as kg CO<sub>2</sub>-eq/tonne



In order to calculate GHG/SLCP emissions and avoidance potentials, users are asked to enter the daily average data such as amount of food waste and garden waste used for composting, fossil-fuel/grid electricity utilisation for operational activities, the total amount of compost production and percentage of produced compost utilisation for agricultural purpose. In the absence of energy consumption data or compost production potential etc. at the city level, the default values provided by the developer can be used. All the default values and emission factors used in this technology have been listed in Table 1 with the references. Box 2 shows the step-by-step procedure to calculate GHG/SLCP emissions from composting. The print screen view of the composting sheet is shown in Figure 10 in which data has been entered in some scenarios to show the procedure of data entry.

Key Data Go to Transportation Composting Go to Anaerobic digestion Go to Recycling Go to MBT Go to Incineration Go to Mix waste Landfilling Go to open burning and landfill fire Go to uncollected Go to Summary

**GHG and SLCP emissions from Composting.**

Data Input

Total amount of organic waste use for composting

Amount of food waste use for composting

Amount of garden waste use for composting

Type of fossil fuel use for operation activities

Total amount of fossil-fuel use for operational activities

Total amount of grid electricity use for operational activities

Compost production potential from waste

% of compost use for the agricultural and gardening purposes

Choose the option for emission factors of chemical fertilizer production in your country

Unit

Tonnes/day

Tonnes / day

Tonnes / day

Type

L/day

kWh/day

kg /tonne

%

Source

**BAU**

0

9030

1450

Diesel

20960

0

300

90

Default values

**Scenario 1**

10480

9030

1450

Diesel

20960

0

300

90

Calculation will be done based on default emission factors

**Scenario 2**

10480

9030

1450

Diesel

20960

0

300

90

**Scenario 3**

10480

9030

1450

Diesel

20960

0

300

90

**Scenario 4**

0

Check available amount

Clear cells

**Results: Summary of the emissions.**

Show Graph

Print Sheet

Category	Type of emissions	Emissions/avoidance	Phase/activity	Emissions from composting (kg/tonne)				
				BAU	Scenario 1	Scenario 2	Scenario 3	Scenario 4
SLCPs	CH <sub>4</sub>	Emissions	CH <sub>4</sub> fossil-Direct (fuel consumption)	0.00	0.00	0.00	0.00	0.00
		Emissions	CH <sub>4</sub> biogenic-Direct ( degradation)	0.00	4.00	4.00	4.00	4.00
		Avoided	CH <sub>4</sub> fossil -(through chemical fertilizer production)	0.00	0.00	0.00	0.00	0.00
		<b>Net emissions</b>	<b>0.00</b>	<b>4.00</b>	<b>4.00</b>	<b>4.00</b>	<b>0.00</b>	
	BC	Emissions	Direct (fossil fuel consumption)	0.00	0.00	0.00	0.00	0.00
		Avoided	Avoided (through chemical fertilizer production)	0.00	0.00	0.00	0.00	0.00
		<b>Net emissions</b>	<b>0.00</b>	<b>0.00</b>	<b>0.00</b>	<b>0.00</b>	<b>0.00</b>	
Other GHGs	CO <sub>2</sub>	Emissions	Direct (fossil fuel consumption)	0.00	5.39	5.39	5.39	0.00
		Emissions	Indirect(grid electricity consumption)	0.00	0.00	0.00	0.00	0.00
		Avoided	Avoided (through chemical fertilizer production)	0.00	5.75	5.75	5.75	0.00
			<b>Net emissions</b>	<b>0.00</b>	<b>-0.36</b>	<b>-0.36</b>	<b>-0.36</b>	<b>0.00</b>
	N <sub>2</sub> O	Emissions	Direct (fossil fuel consumption)	0.00	0.00	0.00	0.00	0.00
		Emissions	Direct (through degradation )	0.00	0.30	0.30	0.30	0.00
		Avoided	Avoided (through chemical fertilizer production)	0.00	0.02	0.02	0.02	0.00
			<b>Net emissions</b>	<b>0.00</b>	<b>0.28</b>	<b>0.28</b>	<b>0.28</b>	<b>0.00</b>
			<b>Net BC emissions (kg of BC/tonne)</b>	<b>0.000</b>	<b>0.001</b>	<b>0.001</b>	<b>0.001</b>	<b>0.000</b>
			<b>Net climate impact of GHGs (kg of CO<sub>2</sub>-eq/tonne)</b>	<b>0.00</b>	<b>186.23</b>	<b>186.23</b>	<b>186.23</b>	<b>0.00</b>

Home Key data Transportation Composting AD Recycling MBT Incineration Mix waste landfilling Open burning and landfill fire Un ...

Figure 10: Print screen view of composting sheet

### 2.3.2 Estimation of GHG/SLCP Emissions from Anaerobic Digestion (AD)

AD has been recognised as one of the most effective approaches for treating the separated organic fraction of waste. Among the biological treatment methods, AD is the most cost effective, due to the potential of high-energy recovery linked to the process as well as its low environmental impact. In order to calculate potential emissions and avoidance from a particular AD facility, users are asked to enter the daily average data such as the amount of food waste, garden waste use for AD,

fossil-fuel and electricity utilisation for operational activities, as well as the type and amount of recovery potential from AD (electricity, thermal energy, biogas)

There are two major ways that AD could emit GHGs/SLCPs: i) GHGs and BC emissions from fossil fuel burning and grid electricity consumption for operation; and ii) GHGs emissions from the reactor due to unavoidable leakages. According to IPCC, unavoidable CH<sub>4</sub> emissions from reactors is 1 kg of CH<sub>4</sub>/tonne of wet organic waste and N<sub>2</sub>O emission can be considered as negligible (IPCC, 2006a).

The biogas can be utilised to produce electricity or in combined heat and power (CHP) plants to both produce electricity and recover heat. In addition, biogas can be directly used as a thermal energy source. Users are encouraged to enter the location-specific energy recovery data for a more precise estimation. In the tool, default energy production values have been given which can be used if the city does not have the data. All the defaults values and emission factors used in AD sheet are listed in Table 1. The produced electricity or the thermal energy could be used to replace fossil-fuel-based conventional electricity and thermal energy production, thereby reducing the GHG/SLCP emissions from those conventional processes. Therefore, avoidance of emissions due to energy recovery has been weighted in the emissions calculation. Similarly, solid digestate can be recovered at the end of the AD process. If the user chooses the option of 'solid digestate is utilised as a compost', the tool will estimate the potential GHG/SLCP avoidance potential due to avoidance of conventional fertilizer application.

In order to understand the net emissions of GHG/SLCP, total avoidance potential should be subtracted from total emissions potential. If the estimated net GHG/SLCP emissions remain as a positive value, it means that the AD technology is still contributing to climate impacts and therefore efficiency resource recovery (e.g. energy, fertilizer) should be further improved. If the result is a net negative GHG/SLCP emissions value, it indicates the potential savings from AD and the possibility to be a carbon sink. The step-by-step procedure of estimating GHG/SLCP emissions from AD is shown in Box 3. The print screen view of the AD sheet is shown in Figure 11.

### Box 3: Method of estimating GHG/SLCP emissions from AD

(i) GHG/SLCP emissions from operational activities of AD

$$Emissions_{GHG(i)-Operation} = \frac{Fuel(unit / day) \times NCV(MJ / unit) \times EF(kg / MJ) + EC \times EF_{el}}{AOW(tonnes / day)}$$

Emissions<sub>GHG(i)-operation</sub> – Emissions i<sup>th</sup> GHG (different type of GHG e.g. CO<sub>2</sub>, CH<sub>4</sub>, N<sub>2</sub>O)

Fuel (unit) – Total amount of fossil fuel units (kg or L) consumption per day

NCV<sub>FF</sub> – Net calorific value of fossil fuel consumed

EF – CO<sub>2</sub>, CH<sub>4</sub>, N<sub>2</sub>O emission factor of fuel (e.g. diesel: 0.074 kg CO<sub>2</sub>/MJ)

EC- Electricity consumption for operation activities (kWh/day)

EF<sub>el</sub> – Emission factor of grid electricity production (kg CO<sub>2</sub>-eq/kWh)

AOW- Amount of Waste use for AD (tonnes/day)

(ii) SLCP (e.g. BC) emissions from operational activities of AD

$$Emissions_{BC-Operation} = \frac{Fuel(unit / day) \times NCV(MJ / unit) \times EF(g / MJ) / 1000}{AOW(tonnes / day)}$$

EF – EF of black carbon has given in g/MJ (divided by 1000 to convert into kg)

(iii) GHG emissions from AD process

GHG emissions from digestion process are calculated as follows:

$$Emission_{GHG(i)-Leakage} = EF(kg / tonne)$$

EF – Emissions of CH<sub>4</sub> due to unavoidable leakages (kg/tonne of organic waste)

(iv) Total i<sup>th</sup> GHGs emissions from AD are calculated as follows:

$$TotalGHG_{(i)} = Emissions_{Operation} + Emission_{Degradation}$$

(v) Avoided GHG emissions by recovering electricity

$$AvoidanceGHG_{(i)} = A_{Biogas} \times P_{CH4} \times E_{CH4} \times \frac{1}{CF_{Energy}} \times E_{Powerplant} \times EF_{el}$$

Avoidance GHG<sub>(i)</sub> – i<sup>th</sup> GHG avoidance due to electricity production (kg/tonne)

A<sub>Biogas</sub> – Amount of Biogas produced (m<sup>3</sup>/tonne); P<sub>CH<sub>4</sub></sub> – Percentage of CH<sub>4</sub> in biogas (%)

E<sub>CH<sub>4</sub></sub> – Energy content of CH<sub>4</sub> (MJ/m<sup>3</sup>); CF<sub>Energy</sub> – Conversion Factor of Energy (3.6 MJ/kWh)

E<sub>Powerplant</sub> – Efficiency of the Power plant (%); EF<sub>el</sub> – Emission factor of country grid electricity production (kg CO<sub>2</sub>-eq/kWh)

(vi) Avoided GHG/SLCP emissions by utilising biogas as thermal energy source for replacing fossil energy

$$AvoidanceGHG / SLCP_{(i)} = C_{Biogas} \times P_{CH4} \times E_{CH4} \times EF_{(i)}$$

Avoidance GHG<sub>i</sub> – i<sup>th</sup> GHG avoidance due to thermal energy production (kg /tonne)

C<sub>Biogas</sub> – Collected amount of biogas (m<sup>3</sup>/tonne)

P<sub>CH<sub>4</sub></sub> – Percentage of CH<sub>4</sub> in biogas (%)

E<sub>CH<sub>4</sub></sub> – Energy content of CH<sub>4</sub> (MJ/m<sup>3</sup>)

EF<sub>(i)</sub> – Emission factor of i<sup>th</sup> GHG/SLCP by avoided fossil fuel combustion (kg/MJ)

(vii) Avoided GHG emissions by utilising digestate as compost and thereby replacement of chemical fertilizer is calculated as follows:

$$AvoidedGHG / SLCP_{(i)} = AC \times PC_{Agriculture} \times A_{GHG}$$

$AVoidedGHG_{(i)}$  – Avoided  $i^{th}$  GHG from AD due to avoidance of chemical fertilizer production (kg/tonne)  
 $AC$  – Amount of digestate/Compost produced (tonne of compost/tonne of waste)  
 $PC_{Agriculture}$  – Percentage of digestate/compost use for agricultural and gardening purpose (%)  
 $AGHG_{(i)}$  –  $i^{th}$  GHG Avoidance potential from chemical fertilizer production which is equivalent to one tonne of compost (kg/tonne of compost)

(viii) Net  $i^{th}$  GHG emissions and net BC emissions can be calculated as follows:

$$Net(GHG)_{(i)} = Total(GHG)_{(i)} - Avoided(GHG)_{(i)}; Net(BC) = Total(BC) - Avoided(BC)$$

(ix) Net climate impact from all GHGs (except BC) is estimated as follows:

$$NetGHG_{(CO_2-eq/tonne)} = (CO_{2(net)} \times 1 + CH_4(biogenic)_{(net)} \times 28 + CH_4(fossil)_{(net)} \times 30 + N_2O_{(net)} \times 265)$$

Net GHG emissions – Estimated as kg of CO<sub>2</sub>-eq/tonne

Key Data
Go to Transportation
Go to Composting
Anaerobic digestion
Go to Recycling
Go to MBT
Go to Incineration
Go to Mix waste landfilling
Go to open burning and landfill fire
Go to uncollected
Go to Summary

### GHG and SLCP emissions from Anaerobic Digestion (AD)

**Data Input**

Total amount of organic waste used for anaerobic digestion

Amount of food waste used for AD

Amount of garden waste used for AD (if any)

Type of fossil fuel used for operation activities

Total amount of fossil fuel used for operational activities

Total amount of grid electricity used for operational activities

Select the data source for energy production potentials from AD

The product of energy from AD

If the recovered product is heat or biogas, select the type of fossil fuel which would be replaced by the recovered heat or biogas

Recovery of compost (solid digestate) from AD

Unit

BAU	Scenario 1	Scenario 2	Scenario 3	Scenario 4
0.00	0.00	0.00	0.00	0.00

Check available amount

Help					

**Output: Products from anaerobic digestion**

	Unit	BAU	Scenario 1	Scenario 2	Scenario 3	Scenario 4
Electricity	kWh/tonne	0.00	0.00	0.00	0.00	0.00
Heat recovered	MJ/tonne	0.00	0.00	0.00	0.00	0.00
Biogas (as thermal energy source)	m <sup>3</sup> /tonne	0.00	0.00	0.00	0.00	0.00
digestate use for agriculture	kg/tonne	0.00	0.00	0.00	0.00	0.00

**Results: Summary of the emissions –AD**

Show Graph
Print Sheet

Category	Type of emissions	Emission/avoidance potential	Phase/activity	Emissions from Anaerobic digestion (kg/tonne)				
				BAU	Scenario 1	Scenario 2	Scenario 3	Scenario 4
SLCPs	CH <sub>4</sub>	Emissions	CH <sub>4</sub> biogenic-Direct (unavoidable leakages)	0.00	0.00	0.00	0.00	0.00
			CH <sub>4</sub> fossil-Direct (fuel consumption)	0.00	0.00	0.00	0.00	0.00
			CH <sub>4</sub> fossil-Through heat recovery	0.00	0.00	0.00	0.00	0.00
		Avoided	CH <sub>4</sub> fossil-Use of biogas as thermal energy source	0.00	0.00	0.00	0.00	0.00
			CH <sub>4</sub> fossil-Through chemical fertilizer production	0.00	0.00	0.00	0.00	0.00
			<b>Net emissions</b>	<b>0.00</b>	<b>0.00</b>	<b>0.00</b>	<b>0.00</b>	<b>0.00</b>
	BC	Emissions	Direct (fossil fuel consumption)	0.00	0.00	0.00	0.00	0.00
			Through heat recovery	0.00	0.00	0.00	0.00	0.00
		Avoided	Through utilization of biogas as thermal energy source	0.00	0.00	0.00	0.00	0.00
			<b>Net emissions</b>	<b>0.00</b>	<b>0.00</b>	<b>0.00</b>	<b>0.00</b>	<b>0.00</b>
Other GHGs	CO <sub>2</sub>	Emissions	Direct (fossil fuel consumption)	0.00	0.00	0.00	0.00	0.00
			Indirect (use of grid electricity)	0.00	0.00	0.00	0.00	0.00
			Through electricity production	0.00	0.00	0.00	0.00	0.00
		Avoided	Through heat recovery	0.00	0.00	0.00	0.00	0.00
			Through utilization of biogas as thermal energy source	0.00	0.00	0.00	0.00	0.00
			Through avoided chemical fertilizer production	0.00	0.00	0.00	0.00	0.00
	N <sub>2</sub> O	Emissions	Direct (fossil fuel consumption)	0.00	0.00	0.00	0.00	0.00
			Through heat recovery	0.00	0.00	0.00	0.00	0.00
		Avoided	Through utilization of biogas as thermal energy source	0.00	0.00	0.00	0.00	0.00
			Through avoided chemical fertilizer production	0.00	0.00	0.00	0.00	0.00
<b>Net emissions</b>	<b>0.00</b>	<b>0.00</b>	<b>0.00</b>	<b>0.00</b>	<b>0.00</b>			
	<b>Net BC emissions (kg of BC/tonne)</b>	<b>0.00</b>	<b>0.00</b>	<b>0.00</b>	<b>0.00</b>	<b>0.00</b>		
<b>Net climate impact of GHGs (tonne of CO<sub>2</sub>-eq/tonne)</b>	<b>0.00</b>	<b>0.00</b>	<b>0.00</b>	<b>0.00</b>	<b>0.00</b>			

Home
Key data
Transportation
Composting
AD
Recycling
MBT
Incineration
Mix waste landfilling
Open burning and land

Figure 11: Print screen view of AD sheet

### **2.3.3 Estimation of GHG/SLCP Emissions from Recycling**

Recycling has long been recognised as an environmentally-friendly waste management option. A significant amount of valuable materials can be recovered from waste recycling, with positive outcomes for the environment, economy and greater society. Incorporating recycling into integrated waste management would be the most valuable action to drive the entire system towards sustainability. Therefore at present, many cities are interested in moving towards material recycling and resource recovery.

Recycling is not a simple process, and it includes different activities such as cleaning, baling, sorting, smelting etc. The entire process requires a significant amount of fossil energy and grid electricity. Thus, all these activities may emit a considerable amount of GHG/SLCP. On the other hand, material recovered from the recycling processes can be used to replace the virgin production of an equivalent amount of materials, thereby avoiding a massive amount of GHG/SLCP emissions that would otherwise occur through the production of the virgin resources. Therefore, estimation of net GHG/SLCP emissions from a recycling scheme is very important to inform decisions on addressing overall climate impacts.

In order to carry out an assessment on GHG/SLCP emissions from recycling activities in a particular city, data related to the composition of major type of recyclables (% paper and cardboard, % plastic, % Aluminium, %Metal/steel and % Glass), total fossil fuel and electricity requirement for the entire recycling process (cleaning, particle size reduction, baling, smelting etc.) and the recyclability (how much material can actually be recovered) of different type of materials is required. It should be noted that this data should be provided with respect to two aspects of recycling: (i) recyclables collected by the city, and (ii) recyclables collected by the informal sector. Finding data on recycling process flow of informal sector may prove difficult for the city. In reality, recyclables collected by informal sector join up with the formal route after pre-processing. Therefore, energy consumption and material recovery potential can be assumed to be similar to the formal unit weight values of material recycling.

In some cities, pre-process recyclables might be transported to another province for final smelting/recycling. However, finding data on these logistical processes may be difficult at the city level. Therefore, energy consumption for transportation of recyclables for further smelting/recycling is considered equivalent to the corresponding fuel consumption for transportation of the virgin materials and therefore ignores the emissions from long-distance transportation of recyclables.

Recycling entails more than a one-stage process and the various stakeholders involved with this process. Obtaining site-specific data related to recycling of different types of recyclables presents a challenge for the municipal policy makers. Cooperation from all stakeholders who are connected with the recycling flow would be necessary to gather sound data. Therefore, in the recycling sheet,

the users have two options: either to enter the location-specific data (if available), or to choose the default values.

Option I estimates emissions based on location/country-specific data; cities may cooperate with relevant recycling/smelting companies to collect this data. Usually recycling companies keep records of monthly data (e.g. operational capacity, total energy consumption). Once the location-specific data has been entered in the given table, GHG/SLCP emissions can be calculated with respect to data on waste composition provided by the user.

Option II: Estimate the emissions based on default values: "The developer has provided average energy consumption data and related emissions which are available in literature. The emissions will be calculated based on the default energy consumption data."

Recycled material can be used in finished or intermediary products and therefore the equivalent quantity of material made from virgin inputs can be replaced. According to the literature, the potential recyclability of major recyclables such as paper, plastic, aluminium, metal and glass is as high as 90-95%. The amount of recovered materials from recycling would be equal to the amount of potential avoidance of virgin resources. The developer has been provided default energy consumption data and related GHG/SLCP emissions from virgin production. In the absence of location specific data, GHG/SLCP emissions from virgin production process chains can be calculated based on the default values. If users are aware of country-specific emissions from virgin production of materials, it is desirable to enter such data into the tool for precise estimation. Emission factors and default values used in the recycling sheet have been summarised in Table 1. The calculation procedure for estimating emissions has been shown in Box4.

Similar to any other technology, if the estimated net GHG/SLCP emissions remain as a positive value, it implies that the recycling process is still contributing to climate impact. In most cases, a net negative GHG/SLCP emission value may be expected due to the avoidance of a massive amount of emissions that would occur from virgin resource production chains. If the result is a net negative emission value, it indicates the potential GHG/SLCP saving potential from the recycling process chain and the possibility to be a carbon sink.

It is important to highlight that, when compared to other waste management technologies, GHG/SLCP mitigation potential from appropriate recycling schemes is highly significant. In this regard, more accurate data collection is very important when taking into account the location-specific data.

#### Box 4: Method of estimating GHG/SLCP emissions from recycling

(i) GHG/SLCP emissions from operational activities of one type of recyclables (e.g. paper) recycling

$$Emissions_{GHG(i)-Operation} = \frac{Fuel(unit / day) \times NCV(MJ / unit) \times EF(kg / MJ) + EC \times EF_{el}}{AOR(tonnes / day)}$$

Emissions<sub>GHG(i)-operation</sub> – Emissions i<sup>th</sup> GHG (e.g. CO<sub>2</sub>, CH<sub>4</sub>, N<sub>2</sub>O) from operational activities

Fuel (unit) – Total amount of fossil fuel units (kg or L) consumption per day (for all the operations)

NCV<sub>FF</sub> – Net calorific value of fossil fuel consumed

EF – CO<sub>2</sub>, CH<sub>4</sub>, N<sub>2</sub>O emission factor of fuel (e.g. diesel: 0.074 kg CO<sub>2</sub>/MJ)

EC - Electricity consumption for operation activities (kWh/day)

EF<sub>el</sub> – Emission factor of grid electricity production (kg CO<sub>2</sub>-eq/kWh)

AOR - Amount of Recyclables (tonnes/day)

(ii) SLCP (e.g. BC) emissions from operational activities of one type of recyclables (e.g. paper)

$$Emissions_{BC-Operation} = \frac{Fuel(unit / day) \times NCV(MJ / unit) \times EF(g / MJ) / 1000}{AOR(tonnes / day)}$$

EF – EF of black carbon has given in g/MJ (divided by 1000 to convert into kg)

(iii) GHG/SLCP emissions from recyclable mix (mixture of recyclables collected from the city) =

$$Emissions_{GHGs/SLCPs(i)} = Total_{recyclables} \times PC_{Paper} \times E_{Paper(i)} + Total_{recyclables} \times PC_{Plastic} \times E_{Plastic(i)} + Total_{recyclables} \times PC_{Aluminium} \times E_{Aluminium(i)} + Total_{recyclables} \times PC_{Metal} \times E_{Metal(i)} + Total_{recyclables} \times PC_{Glass} \times E_{Glass(i)}$$

Emissions<sub>GHGs/SLCPs(i)</sub> – Emissions from i<sup>th</sup> GHG/SLCP from the recyclable mix (kg/tonne)

Total<sub>recyclables</sub> – Total amount of recyclables collected (tonnes/day)

PC – Percentage of different types in the composition (e.g. paper, plastic, aluminium)

E<sub>paper(i)</sub> – Amount of i<sup>th</sup> emissions per tonne of paper recycling (kg/tonne)

(iv) Avoided GHG/SLCP emissions from recyclable mix through material recovery =

$$Avoided_{GHGs/SLCPs(i)} = Total_{recyclables} \times PC_{Paper} \times RE_{Paper} \times EV_{Paper(i)} + Total_{recyclables} \times PC_{Plastic} \times RE_{Plastic} \times EV_{Plastic(i)} + Total_{recyclables} \times PC_{Aluminium} \times RE_{Aluminium} \times EV_{Aluminium(i)} + Total_{recyclables} \times PC_{Metal} \times RE_{Metal} \times EV_{Metal(i)} + Total_{recyclables} \times PC_{Glass} \times RE_{Glass} \times EV_{Glass(i)}$$

Avoided<sub>GHG/SLCP(i)</sub> - Avoided i<sup>th</sup> GHG/SLCP emissions from recovery of material (kg/tonne)

Total<sub>recyclables</sub> – Total amount of recyclables collected (tonnes/day)

PC - Percentage of different types in the composition (e.g. paper, plastic, aluminium)

RE – Recyclability of materials (actual amount of materials recovery per tonne of waste (%))

EV<sub>(i)</sub> – Amount of i<sup>th</sup> Emissions per tonne Virgin material production. (kg/tonne)

(v) Net i<sup>th</sup> GHG emissions and net BC emissions from recycling;

$$Net(GHG)_{(i)} = Total(GHG)_{(i)} - Avoided(GHG)_{(i)}; Net(BC) = Total(BC) - Avoided(BC)$$

(vi) Net climate impact from all GHGs (except BC) is estimated as follow;

$$NetGHG_{(CO2-eq/tonne)} = (CO_{2(net)} \times 1 + CH_4(biogenic)_{(net)} \times 28 + CH_4(fossil)_{(net)} \times 30 + N_2O_{(net)} \times 265)$$

Net GHG emissions – Estimated as kg of CO<sub>2</sub>-eq/tonne

Key Data
Go to Transportation
Go to Composting
Go to Anaerobic digestion
Recycling
Go to MBT
Go to Incineration
Go to Mix waste landfilling
Go to open burning and landfill fire
Go to uncollected waste
Go to Summary

### GHG and SLCP emissions from Recycling

Data Input User input is required in green cells \*

**(1) Recyclables collected by the city (e.g. Municipality or contracted/authorized private companies)**

		BAU	Scenario 1	Scenario 2	Scenario 3	Scenario 4
Total amount of cleaned recyclables collected by the city	Tonnes/day	0	5160	5160	5160	0
Composition (percentage %) of cleaned recyclables collected by the city						
	Check available amount					
Paper and cardboard	Percentage (%)		33.50	33.50	33.50	
Plastic			41.00	41.00	41.00	
Aluminium			8.20	8.20	8.20	
Metal/Steel			8.20	8.20	8.20	
Glass			9.10	9.10	9.10	
<b>Total</b>			<b>0.00</b>	<b>100.00</b>	<b>100.00</b>	<b>100.00</b>

**(2) Recyclables collected by the informal sector (e.g. waste pickers, households, any voluntary organizations)**

		BAU	Scenario 1	Scenario 2	Scenario 3	Scenario 4
Total amount of mixed recyclables collected by the informal collectors	Tonnes/day	0	0	0	0	0
Composition (percentage %) of cleaned recyclables collected by the informal sector						
Paper and cardboard	Percentage (%)					
Plastic						
Aluminium						
Metal/Steel						
Glass						
<b>Total</b>			<b>0.00</b>	<b>0.00</b>	<b>0.00</b>	<b>0.00</b>

**(3) Energy consumption data** Clear

**(i) Energy consumption for transportation:** Energy consumption for transportation of recyclables for further processing/ manufacturing is considered as equivalent to the corresponding fuel consumption for transportation of the virgin materials and therefore emissions from long distance transportation of recyclables are ignored.

**(ii) Energy consumption for processing activities (cleaning, sorting, baling, processing)**

Data source for energy consumption data for recycling Help Default values

**Location specific data requirement**

Description	Unit
Type of fossil fuel use for recycling	L/tonne
Amount of fossil fuel used	kWh/tonne
Amount of grid electricity used	%
Recyclability of materials	%

**Default energy consumption data**

Description	Unit
Type of fossil fuel use for recycling	Type
Amount of fossil energy	MJ/tonne
Amount of grid electricity used	kWh/tonne
Recyclability of materials	%

Type of recyclables

Paper	Plastics	Aluminium	Steel	Glass

Calculation will be done using the default values given in this Table

Type of recyclables				
Paper	Plastics	Aluminium	Steel	Glass
Coal				Natural Gas
13899.94				6868.3
	500	660		900
90	90	96		95

**(iv) Avoided emission quantification through material recovery**

Recycled material can be used in finished or intermediary products and therefore equivalent quantity of material made of virgin inputs can be replaced. Avoided emissions from virgin production process will be calculated based on default data in D184-O195

**(iv) Avoided emission quantification through material recovery**

Recycled material can be used in finished or intermediary products and therefore equivalent quantity of material made of virgin inputs can be replaced. Avoided emissions from virgin production process will be calculated based on default data in D184-O195

**Results: Summary of the emissions**

Show Graph
Print Sheet

Type of emissions		Emission/avoidance potential	Phase/activity	Emissions from recycling activities (kg/tonne of mixed recyclable waste)				
				BAU	Scenario 1	Scenario 2	Scenario 3	Scenario 4
SLCPs	CH <sub>4</sub>	Emissions	CH <sub>4</sub> fossil - Direct (fuel consumption)	0.000	0.010	0.010	0.010	0.000
		Avoided	Through material recovery	0.000	0.021	0.021	0.021	0.000
		<b>Net emissions</b>		<b>0.000</b>	<b>-0.011</b>	<b>-0.011</b>	<b>-0.011</b>	<b>0.000</b>
	BC	Emissions	Direct (fossil fuel consumption)	0.000	0.020	0.020	0.020	0.000
		Avoided	Through material recovery	0.000	0.037	0.037	0.037	0.000
		<b>Net emissions</b>		<b>0.000</b>	<b>-0.017</b>	<b>-0.017</b>	<b>-0.017</b>	<b>0.000</b>
Other GHGs	CO <sub>2</sub>	Emissions	Direct (fossil fuel consumption)	0.000	344.672	344.672	344.672	0.000
		Indirect (Use of grid electricity)	0.000	178.848	178.848	178.848	0.000	
		Avoided	Through material recovery	0.000	1,837.693	1,837.693	1,837.693	0.000
	<b>Net emissions</b>		<b>0.000</b>	<b>-1,314.173</b>	<b>-1,314.173</b>	<b>-1,314.173</b>	<b>0.000</b>	
	N <sub>2</sub> O	Emissions	Direct (fossil fuel consumption)	0.000	0.003	0.003	0.003	0.000
		Avoided	Through material recovery	0.000	0.006	0.006	0.006	0.000
<b>Net emissions</b>			<b>0.000</b>	<b>-0.003</b>	<b>-0.003</b>	<b>-0.003</b>	<b>0.000</b>	
Net impact	Net BC emissions (kg of BC/tonne of mixed recyclable waste)			0.000	-0.017	-0.017	-0.017	0.000
	Net climate impact of GHGs (kg of CO <sub>2</sub> -eq/tonne of mixed recyclable waste)			0.00	-1,315.23	-1,315.23	-1,315.23	0.00

Home
Key data
Transportation
Composting
AD
Recycling
MBT
Incineration
Mix waste landfilling
Open burning and landfill fire
Un
...
+
-

Figure 12: Print screen view of Recycling sheet



## **2.4 Selection of technologies for treating mixed MSW**

As explained previously, a percentage of organic waste and recyclables may be separated at the household level or at a material recovery facility to be treated by composting, AD and/or recycling. The remaining bulky mixed waste can be treated with MBT, incineration and landfilling/open dumping. Users should decide which disposal/treatment technique would be most appropriate for their city based on the characteristics of the mixed waste, as well as their respective technical and financial capacities. Users are subsequently requested to provide technology-specific data in relevant worksheets if they have selected those technologies in BAU or intended scenarios. Detailed specifications of MBT, incineration and landfilling (including open dumping) are described in the section below.

### **2.4.1 Estimation of GHG/SLCP Emissions from Mechanical Biological Treatment (MBT)**

Mechanical Biological Treatment (MBT) systems enable the recovery of materials in mixed waste and facilitate the stabilisation of the biodegradable component of the materials. In this tool, it was assumed that good quality recyclables have already been recovered (perhaps at a material recovery facility) for recycling from mixed waste streams prior to the MBT process. MBT can reduce the volume of mixed waste through the decomposition of organic substances prior to landfilling, as well as minimise GHG emissions ( $\text{CH}_4$ ) from landfill sites. Furthermore, the MBT process enhances the separation of different material fractions, such as compostable materials and high-energy fractions (e.g. plastic) after stabilisation of waste prior to final disposal. Under optimised conditions such as homogenisation, ventilation, and/or irrigation, organic waste degrades rapidly. In fact, total mass loss during the MBT process may be as high as 50% (Phitsanulok Municipality, 2012). The stabilised material can be screened into three parts: compost-like materials; waste plastics (which can be used to produce RDF or crude oil), and inert materials.

BC emissions from MBT are mainly related to the utilisation of fossil fuel for operational activities. As far as other GHG emissions from MBT process are concerned, these emissions may also occur due to fossil fuel and grid electricity consumption for operational activities ( $\text{CO}_2$ ,  $\text{CH}_4$ ,  $\text{N}_2\text{O}$ ), as well as during the degradation of organic waste ( $\text{CH}_4$ ,  $\text{N}_2\text{O}$ ). Generally, MBT is an aerobic process and therefore, a large fraction of the degradable organic carbon in the waste material is converted into  $\text{CO}_2$ .  $\text{CO}_2$  emissions have biogenic origin and would not be taken into account for GHG calculations. Under good management, aerobic conditions can be maintained in the piles which would contribute to reducing  $\text{CH}_4$ ,  $\text{N}_2\text{O}$  production. However, as recommended by IPCC,  $\text{CH}_4$  emission potential from degradation of waste in MBT piles is considered in the tool (4 kg  $\text{CH}_4$ /tonne of organic waste on a wet basis). If such  $\text{CH}_4$  production takes place in the bottom layer of MBT piles, most of the  $\text{CH}_4$  can be oxidised to a large extent in the aerobic sections of the piles. Due to these reasons, there would be a minimal possibility of releasing  $\text{CH}_4$  into the atmosphere. According to IPCC guidelines (IPCC, 2006), MBT process also produces  $\text{N}_2\text{O}$  in minor concentrations (e.g. 0.3 kg  $\text{N}_2\text{O}$ /tonne of organic waste on a wet basis).

A further benefit of MBT is the potential recovery of recyclables (namely if collected waste used for MBT precedes the separation of resources). Furthermore, degraded organic waste in the piles can be utilised as a compost-like product with implications for reducing utilization of conventional fertilizer. However, compostable materials derived from MBT process will be of a lower quality compared to compost derived from source segregated organic waste. Accordingly, the developer suggests to select the option "Utilization of compost-like product as a fertilizer to reduce chemical fertilizer application" only if the product meet the quality standard of compost. In these situations, avoidance of chemical fertilizer utilisation would contribute to a reduction in GHG/SLCP emissions that would otherwise occur from chemical fertilizer production process. Some cities may use stabilized compost like materials as a cover material (e.g. landfill cover or other applications). In such a situation, potential credits for avoidance emissions from conventional cover materials utilization is assumed to be negligible. Furthermore, a considerable fraction of plastic can be recovered from stabilised materials from MBT piles. The recovered plastic waste can be used to produce Residual Derived Fuel (RDF) or for extraction of crude oil via the pyrolysis process.

In order to quantify overall GHG/SLCP emissions from the entire MBT process, users are asked to provide location-specific daily average data on fossil fuel and grid electricity consumption for operational activities, amount of compost-like products used as fertilizer (if the city utilises a compost-like product for agriculture), amount of recovered plastic for RDF/crude oil production (only if the city practices this approach), additional energy requirement for RDF/crude oil production, and crude oil yield from waste plastic, among others. In the case that the city does not have such data, default values provided by the developer can be used for estimating the emissions. If the city does not recover any materials/resources from MBT process, there is no data entry requirement with respect to compost production or RDF/crude oil production. Thus, the user can leave the cells empty for the above mentioned processes. If compost-like material production, and/or RDF/crude oil production is practiced by the city, the potential avoidance of GHG/SLCP emissions will be estimated based on the user input data for avoidance of conventional fertilizer and conventional energy. It should be noted that production of energy using RDF or crude oil would not greatly comprise a climate friendly solution as this pathway of energy production has a fossil fuel-based origin (waste plastic originated as a product of virgin crude oil). In other words, emissions from combustion of crude oil produced (from the plastic) and RDF (plastic fraction) would be equivalent to the emissions of virgin fossil fuel (crude oil) combustion in order to obtain an equivalent amount of energy. Therefore, GHG/SLCP avoidance due to combustion of produced RDF or crude oil has not been accounted or credited in this tool. It was assumed that produced crude oil can be used to replace the conventional crude oil and the produced RDF can be used in cement kilns to replace the consumption of coal (i.e., the conventional scenario). Thus, GHG/SLCP emissions related to virgin oil and coal extraction, transportation and processing are included in the tool as utilisation of RDF/crude oil may indirectly influence avoidance of emissions in the virgin fossil fuel production chain. Step-by-step procedure of estimating GHGs and SLCPs emissions from MBT is shown in Box 5. Print screen view of MBT sheet is shown in Figure 13.

## Box 5: Method of estimating GHG/SLCP emissions from MBT

(i) GHG/SLCP emissions from operational activities at MBT facility

$$Emissions_{GHG(i)-Operation} = \frac{Fuel(unit / day) \times NCV(MJ / unit) \times EF(kg / MJ) + EC \times EF_{el}}{AOW(tonnes / day)}$$

Emissions<sub>GHG(i)-operation</sub> – Emissions <sup>i</sup>th GHG (e.g. CO<sub>2</sub>, CH<sub>4</sub>, N<sub>2</sub>O) from operational activities

Fuel (unit) – Total amount of fossil fuel units (kg or L) consumption per day

NCV<sub>FF</sub> – Net calorific value of fossil fuel consumed

EF – CO<sub>2</sub>, CH<sub>4</sub>, N<sub>2</sub>O emission factor of fuel (e.g. diesel: 0.074 kg CO<sub>2</sub>/MJ)

EC- Electricity consumption for operation activities (kWh/day)

EF<sub>el</sub>–Emission factor of grid electricity production (kg CO<sub>2</sub>-eq/kWh)

AOW- Amount of Waste use for MBT (tonnes/day)

(ii) SLCP (e.g. BC) emissions from operational activities at MBT plant

$$Emissions_{BC-Operation} = \frac{Fuel(unit / day) \times NCV(MJ / unit) \times EF(g / MJ) / 1000}{AOW(tonnes / day)}$$

EF – EF of black carbon has given in g/MJ (divided by 1000 to convert into kg)

(iii) GHGs/SLCPs emission from waste degradation in MBT piles

$$Emission_{GHG(i)-Leakage} = EF(kg / tonne)$$

EF – Emissions of CH<sub>4</sub>, N<sub>2</sub>O during degradation (kg/tonne of organic waste)

(iv) Total <sup>i</sup>th GHG emissions from MBT is calculated as follows;

$$Emissions_{Operation} = Emission_{Degradation} + Emission_{Degradation}$$

(v) Avoided GHG/SLCP emissions by replacing chemical fertilizer using compost-like product;

$$AvoidedGHG_{(i)Compost-like-product} = \frac{AC \times PC_{Agriculture} \times A_{GHG}}{1000}$$

AvoidedGHG<sub>(i)</sub>– Avoided <sup>i</sup>thGHG from avoidance of chemical fertilizer production (kg/tonne)

AC – Amount of compost-like product recovered (kg /tonne)

PC<sub>Agriculture</sub> – Percentage of compost-like product use for agricultural and gardening purpose (%)

A<sub>GHG(i)</sub> – <sup>i</sup>th GHG Avoidance potential from chemical fertilizer production which is equivalent to one tonne of compost- like product (kg/tonne of compost)

(vi) Avoided GHG/SLCP emissions by recovering energy from waste plastic

$$AvoidedGHG_{(i)RDF / crude-oil} = RP \times EF_i$$

AvoidedGHG<sub>(i)RDF/crude-oil</sub> – Avoided <sup>i</sup>th GHG/SLCP from RDF/crude oil production (kg /tonne)

RP–Amount of Recovered Product (RDF-kg/tonne; Crude oil L/tonne)

EF<sub>i</sub>– Emission Factor of <sup>i</sup>th GHG/SLCP from processing of fossil fuel (e.g. Virgin oil and coal extraction, transportation and processing (kg /unit)

(vii) Net <sup>i</sup>th GHG emissions and net BC emissions can be calculated as follows;

$$Net(GHG)_{(i)} = Total(GHG)_{(i)} - Avoided(GHG)_{(i)}; Net(BC) = Total(BC) - Avoided(BC)$$

(viii) Net climate impact from all GHG is estimated as follow;

$$NetGHG_{(CO2-eq/tonne)} = CO_{2(net)} \times 1 + CH_4(biogenic)_{(net)} \times 28 + CH_4(fossil)_{(net)} \times 30 + N_2O_{(net)} \times 265$$

Net GHG emission – Estimated as kg CO<sub>2</sub>-eq/tonne

Key Data

Go to Transportation

Go to Composting

Go to Anaerobic digestion

Go to Recycling

MBT

Go to Incineration

Go to Mix waste landfilling

Go to open burning and landfill fire

Go to uncollected

Go to Summary

GHG and SLCP emissions from Mechanical Biological Treatment (MBT)

User input is required in green cells \*

Data Input

Total amount of mixed waste used for MBT

Tonnes / day

0

Composition of the mix waste (percentage %)

Help

Food waste	Percentage (%)					
Garden waste						
Plastics						
Paper						
Textile						
Leather/rubber						
Glass						
Metal (aluminium + steel)						
Nappies (disposable diapers)						
Wood						
Hazardous waste						
Others						
Total			0.00	0.00	0.00	0.00

Type of fossil fuel used for operation activities

Type

Help

Total amount of fossil fuel used for operational activities

L/day

Total amount of electricity used for operational activities

kWh/day

Utilisation of compost-like product as a fertilizer to reduce chemical fertilizer application

Yes or No

Help

Yes

Amount of compost-like product, produced to be used as fertilizer

kg/tonne

Separation of plastic at the end of MBT

Yes or No

Help

Yes - for RDF production

Amount of recovered waste plastics for RDF/ Crude oil production

Tonnes/day

Amount of fossil fuel required for the production process

L/day

Amount of electricity required for the production process

kWh/day

Clear

Results: Summary of the emissions

Show Graph

Print Sheet

Category	Type of emissions	Emission/avoidance potential	Phase/activity	Emissions from MBT (kg/tonne)				
				BAU	Scenario 1	Scenario 2	Scenario 3	Scenario 4
SLCPs	CH <sub>4</sub>	Emissions	CH <sub>4</sub> fossil-Direct (fuel consumption)	0.00	0.00	0.00	0.00	0.00
			CH <sub>4</sub> biogenic-Direct (through degradation)	0.00	0.00	0.00	0.00	0.00
		Avoided	CH <sub>4</sub> fossil-Through avoided chemical fertilizer	0.00	0.00	0.00	0.00	0.00
			CH <sub>4</sub> fossil-Through RDF/ Crude oil production	0.00	0.00	0.00	0.00	0.00
	Net emissions			0.00	0.00	0.00	0.00	0.00
				0.00	0.00	0.00	0.00	0.00
Other GHGs	CO <sub>2</sub>	Emissions	Direct (fossil fuel consumption)	0.00	0.00	0.00	0.00	0.00
			Indirect (Use of grid electricity)	0.00	0.00	0.00	0.00	0.00
		Avoided	Through avoided chemical fertilizer production	0.00	0.00	0.00	0.00	0.00
			Through RDF/ Crude oil production	0.00	0.00	0.00	0.00	0.00
	Net emissions			0.00	0.00	0.00	0.00	0.00
				0.00	0.00	0.00	0.00	0.00
	N <sub>2</sub> O	Emissions	Direct (fossil fuel consumption)	0.00	0.00	0.00	0.00	0.00
			Direct (through degradation)	0.00	0.00	0.00	0.00	0.00
		Avoided	Through avoided chemical fertilizer production	0.00	0.00	0.00	0.00	0.00
			Through RDF/ Crude oil production	0.00	0.00	0.00	0.00	0.00
	Net emissions			0.00	0.00	0.00	0.00	0.00
				0.00	0.00	0.00	0.00	0.00
Net impact	Net BC emissions (kg of BC/tonne)			0.000	0.00	0.00	0.00	0.00
	Net climate impact of GHGs (kg of CO <sub>2</sub> -eq/tonne)			0.00	0.00	0.00	0.00	0.00

Home

Key data

Transportation

Composting

AD

Recycling

MBT

Incineration

Mix waste landfilling

Open burning and landfill fire

Un

...

+

:

Figure 13: Print screen view of MBT sheet

## 2.4.2 Estimation of GHG/SLCP emissions from Incineration

Waste incineration initially became a popular technology for bulky waste treatment given its potential for reducing waste mass volumes from 75% up to 90% (Charles et al., 2010). At present, cities in both developed and developing countries maintain a strong interest in moving towards waste-to-energy projects as a solution to energy challenges as well as gaining financial benefits via energy recovery from waste. Accordingly, incineration can directly eliminate methane emissions from anaerobic degradation of waste at landfill sites as well as displace some degree of

fossil fuel-based electricity generation. In line with these benefits, incineration appears to be an effective short-term solution to tackling the growing waste management issues in most countries.

Implementation of waste-to-energy technologies which are well-designed to meet local needs (technical and financial capacity, waste characteristics) would significantly contribute to GHG/SLCP mitigation and energy recovery processes. However, there is a high possibility of failure if this technology is implemented in developing countries without proper adaptation to local conditions as incineration is designed mostly for the waste management context of developed countries. The inefficiency of incineration has been identified as a common obstacle in most existing plants in developing countries and some cases failures have been reported as a result of such inefficiencies. Waste composition and moisture content of the waste have a strong bearing on the efficiency of incineration. In fact, high moisture content can lead to a higher percentage of energy being consumed (e.g. grid electricity) to produce power from waste: in many developing countries, the majority of combustibles consist of a high percentage of organic waste which has less calorific value, and would lead to low incineration efficiency. Low efficiency of incineration in turn can produce higher GHG/SLCP emissions. By using this tool, users can check the suitability of incineration technology for their city at the outset based on the waste characteristics (e.g. low heating value of the waste). Some cities may have more than one incinerator and therefore this version of the tool facilitate emissions estimations from 3 types of incinerators in each scenarios. If the tool advises that incineration is an appropriate technology for the city, then the user may choose that option; if not, the user should choose another technology for mixed and bulky waste treatment. It should be noted that incineration is a relatively expensive, capital-intensive treatment option, frequently involving substantial operating and maintenance costs with low financial returns. Therefore, developing cities need to be careful when selecting and adapting incineration technologies to meet local conditions.

Waste composition is the key input that directly influences the magnitude of the GHG/SLCP emissions from incineration. The waste composition for incineration has been automatically derived based on the composition of collected waste and the fractions of collected waste use for other technologies. The magnitude of CH<sub>4</sub> and N<sub>2</sub>O emissions largely depends on the type of the incinerator chosen and on the management practices involved. Therefore, users are asked to choose the type of incineration (e.g. Continuous-stoker, Continuous-fluidised bed, Semi-continuous-stoker, Semi-continuous-fluidised bed) from the dropdown list. In addition, users should provide other key data such as the type of fossil fuel used for operational activities (e.g. operation of machine, initial combustion), amount of fossil fuel and grid electricity consumption, efficiency of electricity and heat recovery (if available), percentage of electricity produced and heat use for on-site operational activities etc. for estimating GHG/SLCP from incineration.

Some cities may not have the requisite data associated with incineration. In such situations, default values (energy consumption data, efficiencies of electricity and heat recovery) provided by the developer based on available data in existing literature can be used. For instance, if an incineration facility is designed only for electricity recovery, average efficiency can be 15-30% (part of

generated electricity is utilised for on-site activities, which may amount to 20-50% depending on the management practices involved). If the incineration plant is designed only for heat recovery, the average efficiency can be 80-90%. If the incineration is designed for both heat and power, average electricity efficiency would be 15% and heat efficiency can be 50-60%. In developing countries, it is often difficult to locate long-term consumers of heating services. Therefore only electricity production can be assumed with an average electrical efficiency of 20% (DEFRA, 2013).

There is a possibility to release a significant amount of fossil fuel-based CO<sub>2</sub> during the combustion process, with corresponding impacts on the climate. It should be noted that municipal waste incinerates a heterogeneous mixture of wastes; it has potential to produce both fossil fuel and biogenic CO<sub>2</sub>. Only the climate-relevant CO<sub>2</sub> emissions from the combustion of fossil fuel-based waste such as plastics, certain textiles, rubber, liquid solvents, and waste oil are considered for GHG emissions estimation (IPCC, 2006b). The CO<sub>2</sub> emissions from the combustion of biomass materials (e.g. paper, food and wood waste) contained in the waste are biogenic emissions and should not be taken into account in GHG emissions estimation (IPCC, 2006b). IPCC default values for dry matter content of different type of waste, total carbon content, fossil carbon fraction and oxidation factors have been incorporated in this tool in order to quantify fossil fuel-based CO<sub>2</sub> from incineration process. AS defined by EMEP/EEA (2016), BC emission factor from incineration is considered as 0.322kg/tonne of waste.

In addition, as stated before, there is a possibility to emit CH<sub>4</sub> and N<sub>2</sub>O during the combustion process; however, the magnitude of these emissions depends on the type of incinerator and associated management practices of the incineration plant. Therefore, these emissions will be estimated based on the user input data and type of incineration technology.

After providing all the required input data, results of three incinerators in each scenario will appear in separate tables. In the last result table, shows the aggregated emission due to all kind of incinerators in the city. If the estimated net GHG/SLCP emissions from incineration retain a positive value, it implies that incineration continues to have climate impacts. Conversely, if the results are negative, these, net negative GHG/SLCP values may be attributed to an avoidance of a large percentage of emissions associated with conventional electricity and heat production processes. Therefore, enhancing the efficiency of heat and electricity recovery processes are expected to positively contribute to achieving a GHG/SLCP mitigation target. Step-by-step procedures for calculating GHG/SLCP emissions from incineration is presented in Box 6. A print screen view of the incineration sheet is shown in Figure 14.

Box 6: Method of estimating GHG/SLCP emissions from incineration

(i) GHG/SLCP emissions from operational activities at incineration facility

$$Emissions_{GHG(i)-Operation} = \frac{Fuel(unit / day) \times NCV(MJ / unit) \times EF(kg / MJ) + EC \times EF_{el}}{AOW(tonnes / day)}$$

Emissions<sub>GHG(i)-operation</sub> – Emissions i<sup>th</sup> GHG (e.g. CO<sub>2</sub>, CH<sub>4</sub>, N<sub>2</sub>O) from operational activities

Fuel (unit) – Total amount of fossil fuel units (kg or L) consumption per day

NCV<sub>FF</sub> – Net calorific value of fossil fuel consumed

EF – CO<sub>2</sub>, CH<sub>4</sub>, N<sub>2</sub>O emission factor of fuel (e.g. diesel: 0.074 kg CO<sub>2</sub>/MJ)

EC- Grid electricity consumption for operation activities (kWh/day)

EF<sub>el</sub>–Emission factor of grid electricity production (kg CO<sub>2</sub>-eq/kWh)

AOW- Amount of Waste incinerated (tonnes/day)

(ii) SLCP (e.g. BC) emissions from operational activities at incineration plant

$$Emissions_{BC-Operation} = \frac{Fuel(unit / day) \times NCV(MJ / unit) \times EF(g / MJ) / 1000}{AOW(tonnes / day)}$$

EF – EF of black carbon has given in g/MJ (divided by 1000 to convert into kg)

(iii) Quantify the GHG (e.g. fossil CO<sub>2</sub>) emissions from combustion of waste

$$CE = \sum_i (SW_i \times dm_i \times CF_i \times FCF_i \times OF_i) \times \frac{44}{12}$$

i - type of fossil fuel-based waste incinerated such as textiles, rubber and leather, plastics

CE - Combustion Emissions (kg CO<sub>2</sub>/tonne)

SW<sub>i</sub>-total amount of i<sup>th</sup> type of waste (wet weight) incinerated (kg/tonne of waste)

dm<sub>i</sub> - dry matter content in the waste (partially wet weight) incinerated

CF<sub>i</sub> -fraction of carbon in the dry matter (total carbon content), (fraction; 0.0-1.0)

FCF<sub>i</sub> - fraction of fossil carbon in the total carbon, (fraction; 0.0-1.0)

OF<sub>i</sub> - oxidation factor, (fraction; 0.0 – 100%)

44/12 - conversion factor from C to CO<sub>2</sub>

(iv) Total i<sup>th</sup> GHG emissions from incineration is calculated as follows;

$$TotalGHG / SLCP_{(i)} = Emission_{Degradation} + Emission_{Combustion}$$

(vi -a) Avoided GHG/SLCP emissions via heat recovery

$$AvoidedGHG / SLCP_{(i)} = LHV_{waste} \times E_{HR} \times OC \times EF_i$$

(vi-b) Avoided GHG/SLCP emissions via electricity recovery

$$AvoidedGHG / SLCP_{(i)} = LHV_{waste} \times \frac{E_{ER}}{CF} \times OC \times EF_{el(i)}$$

Avoided GHG/SLCP<sub>(i)</sub>– Avoided i<sup>th</sup> GHG or SLCP from heat recovery from incineration (MJ /tonne)

LHV<sub>waste</sub> – Low Heating Value of mixed waste (MJ/tonne)

E<sub>HR</sub>–Efficiency of Heat Recovery (%); OC–Percentage of onsite Consumption (%)

EF<sub>i</sub>–Emission Factor of i<sup>th</sup> GHGs/SLCPs from avoided fossil fuel combustion (kg/MJ) to provide equivalent amount of energy

E<sub>ER</sub>–Efficiency of Electricity Recovery (%); CF- Conversion Factor (3.6 MJ/kWh)

EF<sub>el</sub>–Emission factor i<sup>th</sup> GHGs from grid electricity production (kg CO<sub>2</sub>-eq/kWh)

(v) Net  $i^{\text{th}}$  GHG emissions and net BC emissions can be calculated as follows;

$$Net(GHG)_{(i)} = Total(GHG)_{(i)} - Avoided(GHG)_{(i)}; Net(BC) = Total(BC) - Avoided(BC)$$

(vi) Net climate impact from all GHGs (except BC) is estimated as follows:

$$NetGHG_{(CO_2\text{-eq/tonne})} = (CO_{2(net)} \times 1 + CH_4(biogenic)_{(net)} \times 28 + CH_4(fossil)_{(net)} \times 30 + N_2O_{(net)} \times 265)$$

Net GHG emissions – Estimated as tonnes of CO<sub>2</sub>-eq/tonne

Key Data
Go to Transportation
Go to Composting
Go to Anaerobic digestion
Go to Recycling
Go to MBT
Incineration
Go to Mix waste landfilling
Go to open burning and landfill fire
Go to uncollected
Go to Summary

**GHG and SLCP emissions from Incineration** User input is required in green cells \*

**Data Input**

Total amount of waste incinerated Tonnes/day

	BAU	Scenario 1	Scenario 2	Scenario 3	Scenario 4
	0	0	0	0	0

Composition of the mix waste use for incineration in your city

		Help
Food waste	(Percentage) %	
Garden waste		
Plastics		
Paper		
Textile		
Leather/rubber		
Glass		
Metal (aluminium + steel)		
Nappies (disposable diapers)		
Wood		
Hazardous waste		
Others		
<b>Total</b>		0.00

		Help
Incinerator I	Amount of waste incinerated	Tonnes/day
Incinerator II	Amount of waste incinerated	Tonnes/day
Incinerator III	Amount of waste incinerated	Tonnes/day
<b>Total incinerated waste</b>		0

**1) Specifications of Incinerator I**

Amount of waste incinerated in Incinerator I Tonnes/day

Select the type of incineration Type Help

Type of fossil fuel used for operational activities Type Help

Total amount of fossil fuel used for the operation activities L/day

Total amount of grid electricity used for the operation activities kWh/day

**Data input on energy recovery (if any)**

Select the type of energy recovered from incineration Help

**2) Specifications of Incinerator II**

Amount of waste incinerated in Incinerator II Tonnes/day

Select the type of incineration Type Help

Type of fossil fuel used for operational activities Type Help

Total amount of fossil fuel used for the operation activities L/day

Total amount of grid electricity used for the operation activities kWh/day

**Data input on energy recovery (if any)**

Select the type of energy recovered from incineration Help

**3) Specifications of Incinerator III**

Amount of waste incinerated in Incinerator III Tonnes/day

Select the type of incineration Type Help

Type of fossil fuel used for operational activities Type Help

Total amount of fossil fuel used for the operation activities L/day

Total amount of grid electricity used for the operation activities kWh/day

**Data input on energy recovery (if any)**

Select the type of energy recovered from incineration Help

Clear



Results- Summary of Emissions

Summary of Emissions-Incinerator I

Energy recovery potential								
	Low Heating Value/Calorific value of waste	MJ/kg	0.00	0.00	0.00	0.00	0.00	0.00
	Net electricity production	kWh/tonne	0.00	0.00	0.00	0.00	0.00	0.00
	Net heat production	MJ/tonne	0.00	0.00	0.00	0.00	0.00	0.00

Summary of the emissions

Category	Type of emissions	Emission/avoidance potential	Phase/activity	Emissions from incineration (kg/tonne)				
				BAU	Scenario 1	Scenario 2	Scenario 3	Scenario 4
SLCPs	CH <sub>4</sub>	Emissions	CH <sub>4</sub> fossil-Direct (fuel consumption)	0.00	0.00	0.00	0.00	0.00
			CH <sub>4</sub> fossil-Direct (through combustion)	0.00	0.00	0.00	0.00	0.00
		Avoided	CH <sub>4</sub> fossil-through heat recovery	0.00	0.00	0.00	0.00	0.00
			Net emissions	0.00	0.00	0.00	0.00	0.00
	BC	Emissions	Direct (fuel consumption)	0.00	0.00	0.00	0.00	0.00
			Direct(through combustion)	0.00	0.00	0.00	0.00	0.00
		Avoided	Through heat recovery	0.00	0.00	0.00	0.00	0.00
		Net emissions	0.00	0.00	0.00	0.00	0.00	
Other GHGs	CO <sub>2</sub>	Emissions	Direct (fuel consumption)	0.00	0.00	0.00	0.00	0.00
			Indirect (use of grid electricity)	0.00	0.00	0.00	0.00	0.00
			Combustion of waste	0.00	0.00	0.00	0.00	0.00
		Avoided	Through electricity production	0.00	0.00	0.00	0.00	0.00
			Through heat recovery	0.00	0.00	0.00	0.00	0.00
			Net emissions	0.00	0.00	0.00	0.00	0.00
	N <sub>2</sub> O	Emissions	Direct (fuel consumption)	0.00	0.00	0.00	0.00	0.00
			Direct (through combustion)	0.00	0.00	0.00	0.00	0.00
		Avoided	Through heat recovery	0.00	0.00	0.00	0.00	0.00
			Net emissions	0.00	0.00	0.00	0.00	0.00
		Net BC emissions (kg of BC/tonne)	0.00	0.00	0.00	0.00	0.00	
		Net climate impact of GHGs (kg of CO <sub>2</sub> -eq/tonne)	0.00	0.00	0.00	0.00	0.00	

Show Graph

Print Sheet

Net emission: summary of emissions from overall incineration activities (This Table shows aggregated emissions from different type of incinerators)

Category	Type of emissions	Emission/avoidance potential	Phase/activity	Emissions from incineration (kg/tonne)				
				BAU	Scenario 1	Scenario 2	Scenario 3	Scenario 4
SLCPs	CH <sub>4</sub>	Emissions	CH <sub>4</sub> fossil-Direct (fuel consumption)	0.00	0.00	0.00	0.00	0.00
			CH <sub>4</sub> fossil-Direct (through combustion)	0.00	0.00	0.00	0.00	0.00
		Avoided	CH <sub>4</sub> fossil-through heat recovery	0.00	0.00	0.00	0.00	0.00
			Net emissions	0.00	0.00	0.00	0.00	0.00
	BC	Emissions	Direct (fuel consumption)	0.00	0.00	0.00	0.00	0.00
			Direct(through combustion)	0.00	0.00	0.00	0.00	0.00
		Avoided	Through heat recovery	0.00	0.00	0.00	0.00	0.00
		Net emissions	0.00	0.00	0.00	0.00	0.00	
Other GHGs	CO <sub>2</sub>	Emissions	Direct (fuel consumption)	0.00	0.00	0.00	0.00	0.00
			Indirect (use of grid electricity)	0.00	0.00	0.00	0.00	0.00
			Combustion of waste	0.00	0.00	0.00	0.00	0.00
		Avoided	Through electricity production	0.00	0.00	0.00	0.00	0.00
			Through heat recovery	0.00	0.00	0.00	0.00	0.00
			Net emissions	0.00	0.00	0.00	0.00	0.00
	N <sub>2</sub> O	Emissions	Direct (fuel consumption)	0.00	0.00	0.00	0.00	0.00
			Direct (through combustion)	0.00	0.00	0.00	0.00	0.00
		Avoided	Through heat recovery	0.00	0.00	0.00	0.00	0.00
			Net emissions	0.00	0.00	0.00	0.00	0.00
		Net BC emissions (kg of BC/tonne)	0.00	0.00	0.00	0.00	0.00	
		Net climate impact of GHGs (kg of CO <sub>2</sub> -eq/tonne)	0.00	0.00	0.00	0.00	0.00	

Figure 14: Print screen view of incineration sheet

### 2.4.3 Estimation of GHG/SLCP emissions from landfilling

Open dumping and landfilling are among the more common waste disposal practices in most cities of the developing world. There are numerous environmental issues generated by landfills. As far as climate impacts are concerned, CH<sub>4</sub> emissions from landfill technologies have been ranked as the third largest anthropogenic CH<sub>4</sub> emission source (IPCC, 2007). Despite the fact that landfill technologies have improved over the last few decades, these developments have not yet reached all parts of the world (Manfredi et al., 2009) due to lack of technological and financial capacity at the city level. For instance, cities in developing countries practice very primary disposal methods like open dumping and sanitary landfilling (top cover, leachate treatment system) even without a gas recovery system. These simple disposal methods have well-documented adverse impacts on human health, economies and the environment, including climate change. On the other hand,

developed countries widely utilise advanced landfill methods such as sanitary landfilling with gas recovery systems. At present, there is a growing interest even in developing countries to move towards landfill gas-to-energy projects, which aim to achieve substantial co-benefits including GHG/SLCP reduction. Anaerobic degradation of mixed waste in open dumps and landfills eventually generates landfill gas (LFG) which contains approximately 60% methane (CH<sub>4</sub>) and 40% carbon dioxide (CO<sub>2</sub>). The CH<sub>4</sub> component of LFG contributes to global warming whereas the CO<sub>2</sub> component is regarded as being biogenic in origin and is thus not considered for GHG accounting (CRA, 2010).

The amount of methane generated at the disposal sites depends on many factors such as type of landfill/dump site, quantity and composition of waste, moisture content, and climatic situation. This sheet has been designed to quantify GHG/SLCP emissions from different types of landfills/open dumps which exist in both developed and developing countries. As far as the type of landfill/open dumps are concerned, by using this tool, users can estimate the emissions (e.g. CH<sub>4</sub>) from both managed and un-managed types of landfills/open dumps, see Table 2. The tool facilitate to quantify up to three different types of landfill/open dump from each scenario.

Table 2: Type of landfills/dump sites includes in the tool

Type of landfill		Methane Correction Factor (MFC)	Oxidation factor (fraction)
Well- Managed (has landfill cover and liner)	Sanitary landfill without gas recovery	1.0	0.1
	Sanitary landfill with gas recovery	1.0	0.1
	Managed- semi-aerobic	0.5	0
Unmanaged	Open dumping-deep (> 5m waste)	0.8	0
	Open dumping- shallow (<5m waste)	0.4	0
	Uncategorised	0.6	0

CH<sub>4</sub> generation rate and the oxidation rate (through the landfill cover) would depend on the landfill type. For instance, a managed sanitary landfill has the potential of producing a greater CH<sub>4</sub> yield than in an unmanaged disposal site (open dumps) where large amount of waste can decay aerobically in the top layers. Deeper unmanaged solid waste disposal sites have greater CH<sub>4</sub> emissions than shallow unmanaged sites. The Methane Correction Factor (MCF) gives an indicator on CH<sub>4</sub> production potential (see Table 2). In the tool, users should select the type of landfill in their city from the drop-down list, with respect to BAU and intended scenarios. If the city has more than one type of landfill/open dump, such data should be included in each scenario.

Total amounts of CH<sub>4</sub> generation from the landfill/open dump in large measure depend on waste composition. The composition of landfilled/open dumped waste will be automatically displayed based on user input in the key data sheet. If the city utilises a percentage of collected waste for other technologies like composting, AD or recycling, the new waste composition will be derived and displayed. If there is no waste separation for those technologies prior to landfilling, the

composition of the collected waste will appear as the composition of disposal waste with respect to the corresponding scenario.

Data entry section has been divided into three parts. In the Part I, user should allocate total amount of waste disposal at landfills/open dumps among the different disposal sites in each scenario. If a city has more than one landfill/open dump, they should enter such data in Part I. Just after entering the amount of waste dispose at each site, if there is any fire/waste burning, user should mention the approximate percentage of waste burn/fire in that disposal site. This information will be used to quantify the GHG/SLCP emissions from open burning and landfill fire in the next sheet. If there has been no fire incident at the landfills/open dumpsites, the user can leave the cells for “% of disposed waste ultimately fired/open-burned in site I, site II, site III” empty.

The next part of data entry is “specifications of the landfill/open dump” and this data must be entered for any kind of landfill/open dump, users should enter all the data asked under part II. In this section, user should provide location-specific data on the type of landfill, starting year of the disposal site, end year of the disposal site, current year of disposal, estimated growth of annual disposal (%), type of fossil fuel use for operation, amount of fossil fuel as well as grid electricity required for the operation. If the user is unaware of the energy consumption data for operational activities, default values provided by the developer in ‘user help’ can be used to estimate the energy consumption in daily basis.

Part III is to provide input data only if the landfill type is 'Sanitary landfill with gas recovery'. Under the ‘Specifications of Landfill-gas recovery project’, the user should provide values for the efficiency of gas collection, the treatment method of LFG, LFG utilisation efficiency, starting year and closing year of LFG recovery project, type of fossil fuel which is replaced by recovered LFG (if LFG use for heating/cooking). If the user does not know the efficiency of the gas collection, LFG utilisation efficiency for electricity production etc., default values provided by the developer in ‘user help’ can be used. If the city does not have ‘sanitary landfilling with gas recovery’ option the user can leave cells empty in the ‘Specifications of landfill-gas recovery session. Although the sanitary landfill with gas recovery option may exist without an energy recovery system, the user can still leave the cells empty. However, landfill gas flaring may be the option in the case of ‘No energy recovery’ choice from sanitary landfill with gas recovery. Flaring would create particulate matter (PM) in the form of BC. However, currently available emissions quantification methods would not be sufficient to quantify BC emissions from landfill gas flaring and these estimations needs to be included in the future.

After to completing data entry in the first landfill/open dump, the user are advised to move to the second and then third landfill/open dump and enter the required data.

The basic concept used in the IPCC 2006 Waste Model has been adopted in this tool to quantify CH<sub>4</sub> emissions from different types of landfills. The guidelines of IPCC strongly encourage the use of the First Order Decay (FOD) model, which produces more accurate emissions estimates as

it reflects the degradation rate of wastes in a disposal site (IPCC 2006). The model assumes that decomposition in the first year can happen aerobically where CH<sub>4</sub> generation is not taking place. In addition, other GHGs and BC emissions will be estimated based on the fossil energy and grid electricity consumption for operational activities. The step-by-step procedure for calculation of GHG/SLCP emissions from landfill/open dump technologies is shown in Box 7.

**Box 7: Method of estimating GHG/SLCP emissions from landfilling/open dumping**

(i) GHG/SLCPs emission from operational activities at landfill/open dump

$$Emissions_{GHG(i)-Operation} = \frac{Fuel(unit / day) \times NCV(MJ / unit) \times EF(kg / MJ) + EC \times EF_{el}}{AOW(tonnes / day)}$$

Emissions<sub>GHG(i)-operation</sub> – Emissions i<sup>th</sup> GHG (e.g. CO<sub>2</sub>, CH<sub>4</sub>, N<sub>2</sub>O) from operational activities

Fuel (unit) – Total amount of fossil fuel units (kg or L) consumption per day

NCV<sub>FF</sub> – Net calorific value of fossil fuel consumed

EF – CO<sub>2</sub>, CH<sub>4</sub>, N<sub>2</sub>O emission factor of fuel (e.g. diesel: 0.074 kg CO<sub>2</sub>/MJ)

EC- Grid electricity consumption for operation activities (kWh/day)

EF<sub>el</sub> – Emission factor of grid electricity production (kg CO<sub>2</sub>-eq/kWh)

AOW- Amount of Waste landfill (tonnes/day)

(ii) SLCPs (e.g. BC) emissions from operational activities landfill/open dump

$$Emissions_{BC-Operation} = \frac{Fuel(unit / day) \times NCV(MJ / unit) \times EF(g / MJ) / 1000}{AOW(tonnes / day)}$$

EF – EF of black carbon has given in g/MJ (divided by 1000 to convert into kg)

(iii) CH<sub>4</sub> emissions from waste degradation in the landfill (based on IPCC 2006 waste model)

The basic equation for the first order decay model is:

$$DDOC_m = DDOC_{m(0)} \times e^{-kt}$$

DDOC<sub>m(0)</sub> - mass of decomposable degradable organic carbon (DDOC) at the start of the reaction, k - reaction constant; t - time in years. DDOC<sub>m</sub> - mass of DDOC at any time.

Mass of decomposable DOC (DDOC<sub>m</sub>) amount of waste material;

$$DDOC_{md(T)} = W_{(T)} \times DOC \times DOC_f \times MCF$$

DDOC<sub>md(T)</sub> - mass of DDOC deposited year T; W<sub>(T)</sub> - amount deposited in year T; MCF - Methane Correction Factor; DOC - Degradable organic carbon; DOC<sub>f</sub> - Fraction of DOC decomposing under anaerobic conditions (0.0-1.0)

The amount of deposited DDOC<sub>m</sub> remaining at the end of deposition year T:

$$DDOC_{mrem}(T) = DDOC_{md}(T) \times e^{(-k \cdot ((13-M)/12))}$$

DDOC<sub>mrem(T)</sub> - mass of DDOC deposited in year T, remaining at the end of year; M - Month of reaction start

The amount of deposited DDOC<sub>m</sub> decomposed during deposition year T:

$$DDOC_{mdec}(T) = DDOC_{md}(T) \times (1 - e^{(-k \cdot ((13-M)/12))})$$

DDOC<sub>mdec(T)</sub> - mass of DDOC deposited decomposed during the year T

The amount of DDOC<sub>m</sub> accumulated in the disposal site at the end of year T

$$DDOC_{ma}(T) = DDOC_{mrem}(T) + (DDOC_{ma}(T-1) \times e^{-k})$$

DDOC<sub>ma(T)</sub> - total mass of DDOC left (not decomposed) at end of year T.

DDOC<sub>ma(T-1)</sub> - total mass of DDOC left not decomposed at end of year T-1

The total amount of DDOCm decomposed in year T  
 $DDOC_{mdecomp}(T) = DDOC_{mdec}(T) + (DDOC_{ma}(T-1) \times (1 - e^{-k}))$   
 $DDOC_{mdecomp}(T)$  - total mass of DDOC decomposed in year T.

The amount of CH<sub>4</sub> generated from DOC decomposed  
 $CH_4 \text{ generated}_{(T)} = DDOC_{mdecomp}(T) \times F \times 16/12$   
 $CH_4 \text{ generated}_{(T)}$  - CH<sub>4</sub> generated in year T; F - Fraction of CH<sub>4</sub> by volume in generated landfill gas (0.0 – 1.0); 16/  
Molecular weight ratio CH<sub>4</sub>/C

The amount of CH<sub>4</sub> emitted from disposal site  
 $CH_4 \text{ emitted in year } T = (\sum CH_4 \text{ generated}_{(T)} - R_{(T)}) \times (1 - OX_{(T)})$   
 $R_{(T)}$ - Recovered CH<sub>4</sub> in year T;  $OX_{(T)}$  - Oxidation factor in year T (fraction)

$$CH_4(\text{pertonne}) = \frac{\sum_0^t CH_4}{\sum_0^t AOW}$$

0-t= total emission during year 0 to t  
AOW = Amount of waste dispose during year 0 to t

(iv )Total i<sup>th</sup> GHG/SLCP emissions from landfilling/open dumping

$$TotalGHG / SLCP_{(i)} = Emission_{Degradation} + Emission_{Degradation}$$

(v-a) Avoided GHG/SLCP emissions via use of LFG for heating or replacing conventional fuel

$$AvoidedGHG / SLCP_{(i)} = LFG(\text{collected})(m^3 / \text{tonne}) \times P_{CH_4} \times HV_{CH_4} \times EF_i$$

(v-b) Avoided GHG/SLCP emissions via electricity recovery

$$AvoidedGHG / SLCP_{(i)} = LFG(\text{collected})(m^3 \text{tonne}) \times P_{CH_4} \times HV_{CH_4} \times \frac{E_{ER}}{CF} \times EF_{el(i)}$$

Avoided GHG<sub>(i)</sub>– Avoided i<sup>th</sup> GHG/SLCP from electricity production from LFG (kg of CO<sub>2</sub>-eq/tonne)

LFG(collected)- Collected LFG (m<sup>3</sup>/tonne)

P<sub>CH<sub>4</sub></sub>–Percentage (%) of CH<sub>4</sub> in LFG (%)

HV<sub>CH<sub>4</sub></sub>-Heating value of CH<sub>4</sub> (MJ/m<sup>3</sup>)

EF<sub>i</sub>-Emission Factor of i<sup>th</sup> GHG/SLCP from avoided fossil fuel combustion (kg/MJ) to provide equivalent amount of energy

E<sub>ER</sub>-Efficiency of Electricity Recovery (%); CF- Conversion Factor (3.6 MJ/kWh)

EF<sub>el</sub>–Emission factor i<sup>th</sup> GHG from grid electricity production (kg CO<sub>2</sub>-eq/kWh)

(vi) Net i<sup>th</sup> GHG emission and net BC emissions can be calculated as follows;

$$Net(GHG)_{(i)} = Total(GHG)_{(i)} - Avoided(GHG)_{(i)}; Net(BC) = Total(BC) - Avoided(BC)$$

(vii) Net climate impact from all GHGs (except BC) is estimated as follow;

$$NetGHG_{(CO_2\text{-eq/tonne})} = (CO_{2(net)} \times 1 + CH_4(biogenic)_{(net)} \times 28 + CH_4(fossil)_{(net)} \times 30 + N_2O_{(net)} \times 265)$$

Net GHG emission – Estimated as tonnes of CO<sub>2</sub>-eq/tonne

GHG/SLCP emissions from each type of landfill/open dump has calculated per tonne of disposed waste in each disposal site, see Figure 15. In order to calculate the net impact from overall disposal activities, if there are more than one type of disposal site, net GHG/SLCP emission from entire landfill management is calculated and presented in a separate table, in which emission from individual sites has been aggregated for a particular scenario.

Users should take note that in order to calculate the CH<sub>4</sub> generation from landfill/ open dump site using the IPCC 2006 waste model, numerous default values are required. The amount of CH<sub>4</sub> generation and collection will be highly dependent on those default values. The required default values for the IPCC 2006 waste model and the approaches of deriving those factors based on waste characteristics is presented in Table 3. All these default values have been assigned to mathematical formulae in the tool and therefore user input is not required for these default values. It should that though CH<sub>4</sub> emissions from a landfill would last several decades, the emissions (e.g. CH<sub>4</sub>) that will happen in the future have been accounted and shown as life cycle emissions with respect to per tonne of disposed waste.

Once the user entered all the required information/data in the landfill sheet with respect to different type of landfills/open dumps in each scenario, emissions will be calculated and displayed in the results tables. The results emissions from disposal site I, site II and site III, will be displayed in separate tables on the basis of emission per tonne of dispose waste in each site. This results will be useful for users to compare the emissions from different type of landfill/open dump in the same city/Municipality. Then the net GHG/SLCP emissions from disposal practices in each scenario has been shown in the last Table in which emissions from individual site has been aggregated taking into account the fraction of total collected waste dispose at each site. Emissions have been calculated as per tonne of disposed waste. A print screen view of the landfill sheet is shown in Figure 15 and Figure 16.

Table 3: The required factors and default values for application of IPCC 2006 waste model

Factor	Unit	Method of deriving
Amount deposited	Gg/Year	MSW disposal (tonnes/day) $\times 365/1000$
Degradable Organic Carbon(DOC)	DOC	Derived based on IPCC default DOC content values, $DOC_{MSW} = \% \text{ of food waste} \times 0.15 + \% \text{ of garden waste} \times 0.43 + \% \text{ of paper waste} \times 0.4 + \% \text{ of textile waste} \times 0.24$
Fraction of DOC decomposing under Anaerobic condition (DOC <sub>f</sub> )	DOC <sub>f</sub>	IPCC default value is 0.5
Methane generation rate constant	k	k value will depend on waste composition of the location $k_{MSW} = \% \text{ of food waste} \times 0.4 + \% \text{ of garden waste} \times 0.17 + \% \text{ of paper waste} \times 0.07 + \% \text{ of textile waste} \times 0.07 + \% \text{ of disposal nappies} \times 0.17 + \% \text{ of wood and straw} \times 0.035$
Half- life time( $t_{1/2}$ , years)	$h = \ln(2)/k$	Can be calculated based on derived k value
exp1	$\exp(-k)$	Can be calculated based on derived k value
Process start in decomposition year, month M	M	IPCC recommended value is after 12 months
Exp2	$\exp(-k((13-M)/12))$	Can be calculated based on derived k and M values
Fraction to CH <sub>4</sub>	F	IPCC recommended value is 0.5
Methane Oxidation on Landfill cover	OX	IPCC recommended value for sanitary landfill with landfill cover is 0.1. for open dumpsites the OX value would be zero
MCF for the landfill/open dumpsite	MCF	According to the management practices, this value will be changed, IPCC recommended default MCF values for Managed (has landfill cover and liner), unmanaged-deep (> 5m waste), Unmanaged-shallow (<5m waste), Uncategorised are 1, 0.8, 0.4 and 0.6 respectively.





Results: Summary of the emissions									
Summary of Emissions-Disposal Site I									
Category	Type of emissions	Emissions/avoidance	Emissions	Emissions from landfill management (kg/tonne)					
				BAU	Scenario 1	Scenario 2	Scenario 3	Scenario 4	
SLCPs	CH <sub>4</sub>	Emissions	CH <sub>4</sub> fossil-Direct (Fuel consumption)	0.000	0.000	0.000	0.000	0.000	0.000
			CH <sub>4</sub> biogenic- Direct (Waste degradation)	37.515	28.879	28.879	28.879	0.000	
		Avoidance	CH <sub>4</sub> biogenic- Avoided (LFG recovery)	0.000	0.000	0.000	0.000	0.000	
			CH <sub>4</sub> fossil- Avoided (through energy recovery)	0.000	0.000	0.000	0.000	0.000	
			Net emissions	37.515	28.879	28.879	28.879	0.000	
	BC	Emissions	Direct (fuel consumption)	0.000	0.000	0.000	0.000	0.000	
			Avoided (through energy recovery)	0.000	0.000	0.000	0.000	0.000	
		Avoidance	Net emissions	0.000	0.000	0.000	0.000	0.000	
				0.000	0.000	0.000	0.000	0.000	
Other GHGs	CO <sub>2</sub>	Emissions	Direct (Fuel consumption)	0.000	0.000	0.000	0.000	0.000	
			Indirect (grid electricity consumption)	0.000	0.000	0.000	0.000	0.000	
		Avoidance	Avoided (through energy recovery)	0.000	0.000	0.000	0.000	0.000	
					Net emissions	0.000	0.000	0.000	0.000
	N <sub>2</sub> O	Emissions	Direct (Fuel consumption)	0.000	0.000	0.000	0.000	0.000	
			Avoided (through energy recovery)	0.000	0.000	0.000	0.000	0.000	
		Avoidance	Net emissions	0.000	0.000	0.000	0.000	0.000	
				0.000	0.000	0.000	0.000	0.000	
	Net impact	Net BC emissions (kg of BC/tonne)		0.000	0.000	0.000	0.000	0.000	0.000
Net climate impact of GHGs (kg of CO <sub>2</sub> -eq/tonne)		1,050.413	808.602	808.602	808.602	808.602	0.000		
Summary of Emissions-Disposal Site III									
Category	Type of emissions	Emissions/avoidance	Emissions	Emissions from landfill management (kg/tonne)					
				BAU	Scenario 1	Scenario 2	Scenario 3	Scenario 4	
SLCPs	CH <sub>4</sub>	Emissions	CH <sub>4</sub> fossil-Direct (Fuel consumption)	0.000	0.000	0.000	0.000	0.000	0.000
			CH <sub>4</sub> biogenic- Direct (Waste degradation)	0.000	0.000	0.000	0.000	0.000	
		Avoidance	CH <sub>4</sub> biogenic- Avoided (LFG recovery)	0.000	0.000	0.000	0.000	0.000	
			CH <sub>4</sub> fossil- Avoided (through energy recovery)	0.000	0.000	0.000	0.000	0.000	
			Net emissions	0.000	0.000	0.000	0.000	0.000	
	BC	Emissions	Direct (fuel consumption)	0.000	0.000	0.000	0.000	0.000	
			Avoided (through energy recovery)	0.000	0.000	0.000	0.000	0.000	
		Avoidance	Net emissions	0.000	0.000	0.000	0.000	0.000	
				0.000	0.000	0.000	0.000	0.000	
Other GHGs	CO <sub>2</sub>	Emissions	Direct (Fuel consumption)	0.000	0.000	0.000	0.000	0.000	
			Indirect (grid electricity consumption)	0.000	0.000	0.000	0.000	0.000	
		Avoidance	Avoided (through energy recovery)	0.000	0.000	0.000	0.000	0.000	
					Net emissions	0.000	0.000	0.000	0.000
	N <sub>2</sub> O	Emissions	Direct (Fuel consumption)	0.000	0.000	0.000	0.000	0.000	
			Avoided (through energy recovery)	0.000	0.000	0.000	0.000	0.000	
		Avoidance	Net emissions	0.000	0.000	0.000	0.000	0.000	
				0.000	0.000	0.000	0.000	0.000	
Net impact	Net BC emissions (kg of BC/tonne)		0.000	0.000	0.000	0.000	0.000	0.000	
	Net climate impact of GHGs (kg of CO <sub>2</sub> -eq/tonne)		0.000	0.000	0.000	0.000	0.000	0.000	
Net emission summary from entire landfill management (This Table shows aggregated emissions from different type of landfills)									
Category	Type of emissions	Emissions/avoidance	Emissions	Emissions from landfill management (kg/tonne)					
				BAU	Scenario 1	Scenario 2	Scenario 3	Scenario 4	
SLCPs	CH <sub>4</sub>	Emissions	CH <sub>4</sub> fossil-Direct (Fuel consumption)	0.000	0.000	0.000	0.000	0.000	0.000
			CH <sub>4</sub> biogenic- Direct (Waste degradation)	37.515	28.879	28.879	28.879	0.000	
		Avoidance	CH <sub>4</sub> biogenic- Avoided (LFG recovery)	0.000	0.000	0.000	0.000	0.000	
			CH <sub>4</sub> fossil- Avoided (through energy recovery)	0.000	0.000	0.000	0.000	0.000	
			Net emissions	37.515	28.879	28.879	28.879	0.000	
	BC	Emissions	Direct (fuel consumption)	0.000	0.000	0.000	0.000	0.000	
			Avoided (through energy recovery)	0.000	0.000	0.000	0.000	0.000	
		Avoidance	Net emissions	0.000	0.000	0.000	0.000	0.000	
				0.000	0.000	0.000	0.000	0.000	
Other GHGs	CO <sub>2</sub>	Emissions	Direct (Fuel consumption)	0.000	0.000	0.000	0.000	0.000	
			Indirect (grid electricity consumption)	0.000	0.000	0.000	0.000	0.000	
		Avoidance	Avoided (through energy recovery)	0.000	0.000	0.000	0.000	0.000	
					Net emissions	0.000	0.000	0.000	0.000
	N <sub>2</sub> O	Emissions	Direct (Fuel consumption)	0.000	0.000	0.000	0.000	0.000	
			Avoided (through energy recovery)	0.000	0.000	0.000	0.000	0.000	
		Avoidance	Net emissions	0.000	0.000	0.000	0.000	0.000	
				0.000	0.000	0.000	0.000	0.000	
Net impact	Net BC emissions from dispose waste in landfills (kg of BC/tonne)		0.000	0.000	0.000	0.000	0.000	0.000	
	Net climate impact of GHGs from dispose waste in landfills (kg of CO <sub>2</sub> -eq/tonne)		1050.413	808.602	808.602	808.602	808.602	0.000	
AD   Recycling   MBT   Incineration   Mix waste landfilling   Open burning and landfill fire   Uncollected waste   Summary   User guide   Figures									

Figure 16: Print screen view of landfill sheet (the results)

#### 2.4.4. Estimation of GHG/SLCP from open burning and landfill fire

Open burning of garbage at the disposal site and landfill fire is very harmful to health and environment. Open burning of MSW is happening in most of the developing countries which causes severe damage on environmental and health. Open burning of waste and landfill fire are the sources of GHG/SLCP emissions. Intentional burning of waste on solid waste disposal sites is

sometimes used as a management practice in some countries to reduce the volume of waste. In addition, unintentional fires/accidental fires occur in disposal sites in some countries due to various reasons. In the landfills fire occur when waste disposed of in a landfill ignites and spreads due to unavailability of landfill cover. Due to all these waste burning/fire at the disposal sites, there is a possibility for emissions of GHG/SLCP.

In this tool, a separate sheet has been designed to quantify the GHG/SLCP emissions from open burning and landfill fire from disposal sites where the collected mix waste has been disposed. In this sheet, the amount of waste and the composition of waste that fire or burn at the disposal sites will be automatically appeared based on the user input data in mixed waste landfill sheet about “amount of mix waste ultimately being fired/ burned openly in disposal site I, II and III”. User should not entre any data in this sheet and the emissions with respect to open burning/landfill fire that occur at disposal sites will appear in a separate table.

In the result table, fossil fuel-based CO<sub>2</sub>, CH<sub>4</sub> and BC emissions from open burning/landfill fire will estimated per tonne of waste burned/fired at the disposal sites. The quantification procedure of emissions from open burning/landfill fire is presented in Box 8 and The print screen view of open burning/landfill fire sheet is shown in Figure 17.

**Box 8: Method of estimating GHG/SLCP emissions from open burning/landfill fire**

(i) CH<sub>4</sub> emissions from open burning/landfill fire

$$Emissions_{CH_4} = EF(kg / tonne)$$

EF-Emission Factor of CH<sub>4</sub> during waste burning/fire (kg/tonne of waste) (emission factor given by Wiedinmyer et al, 2014)

ii) SLCPs (e.g. BC) emissions from open burning/landfill fire

$$Emissions_{BC} = EF(kg / tonne) \text{ (Emission factor given by Bond et al. 2013)}$$

EF-Emission Factor of BC from waste (kg/tonne of waste)

(iii) Quantify the GHGs (e.g. fossil based CO<sub>2</sub>) emissions from open burning/landfill fire

$$E = \sum_i (SW_i \times dm_i \times CF_i \times FCF_i \times OF_i) \times \frac{44}{12}$$

i - type of fossil based waste openly burned/fired in the disposal sites such as textiles, rubber and leather, plastics

E - Emissions (kg CO<sub>2</sub>/tonne of burn/fire waste)

SW<sub>i</sub>-total amount of i<sup>th</sup> type of waste (wet weight) openly burned/fired (kg/tonne of waste)

dm<sub>i</sub> - dry matter content in the waste (partially wet weight) openly burned

CF<sub>i</sub> -Fraction of Carbon in the dry matter (total carbon content), (fraction; 0.0-1.0)

FCF<sub>i</sub> - Fraction of Fossil Carbon in the total carbon, (fraction; 0.0-1.0)

OF<sub>i</sub> - oxidation factor (0-58%)

44/12 - conversion factor from C to CO<sub>2</sub>

(vii) Net climate impact from all GHGs (except BC) is estimated as follow;

$$NetGHG_{(CO_2-eq/tonne)} = (CO_{2(net)} \times 1 + CH_4(biogenic)_{(net)} \times 28)$$

Net GHG emission – Estimated as tonnes of CO<sub>2</sub>-eq/tonne

Key Data

Go to Transportation

Go to Composting

Go to Anaerobic digestion

Go to Recycling

Go to MBT

Go to Incineration

Go to Mix waste landfilling

Open burning/landfill fire

Go to uncollected waste

Go to Summary

GHG and SLCP emissions from open burning/landfill fire of collected waste

Data Input

Unit

	BAU	Scenario 1	Scenario 2	Scenario 3	Scenario 4
Total amount of mix waste ultimately being fired/ burned openly in site I	24048.00	0.00	0.00	0.00	0.00
Total amount of mix waste ultimately being fired/ burned openly in site II	0.00	0.00	0.00	0.00	0.00
Total amount of mix waste ultimately being fired/ burned openly in site III	0.00	0.00	0.00	0.00	0.00
Total amount of disposal waste fired/burned openly at the landfills/open dumps	24048.00	0.00	0.00	0.00	0.00

Composition of mixed waste openly burned/fired in the landfills/open dumps

Help

Food waste		45.05			
Garden waste		7.22			
Plastics		10.56			
Paper		8.61			
Textile		1.61			
Leather/rubber	(Percentage )	0.44			
Glass	%	2.34			
Metal (aluminium + steel)		4.22			
Nappies (disposable diapers)		0.00			
Wood		0.00			
Hazardous waste		19.95			
Others		0.00			
Total		100.00	0.00	0.00	0.00

Results: Summary of the emissions

Show Graph

Print Sheet

Category	Type of emissions	Emission/avoidance potential	Phase/activity	Emissions from open dumping and open burning (kg/tonne)				
				BAU	Scenario 1	Scenario 2	Scenario 3	Scenario 4
SLCPs	CH <sub>4</sub>	CH <sub>4</sub> biogenic-Direct	From partially burned waste	3.70	0.00	0.00	0.00	0.00
	BC	Direct Emissions	From waste burning	0.65	0.00	0.00	0.00	0.00
Other GHGs	CO <sub>2</sub>	Direct Emissions (fossil)	From waste burning	172.98	0.00	0.00	0.00	0.00
Net impact	Net BC emissions (kg of BC/tonne)			0.65	0.00	0.00	0.00	0.00
	Net climate impact of GHGs (kg of CO <sub>2</sub> -eq/tonne)			276.58	0.00	0.00	0.00	0.00

AD

Recycling

MBT

Incineration

Mix waste landfilling

Open burning and landfill fire

Uncollected waste

Summary

User guide

Figures

...

Figure 17: Print screen view of open burning/landfill fire sheet

## 2.4.5 Estimation of GHG/SLCP from uncollected waste

In general, cities in both developed and developing countries are unable to ensure 100% waste collection service coverage for various reasons. In fact, according to a World Bank assessment, collection rates through formal routes in low income countries are less than 50%, whilst in middle income countries, the rate is 50-80%. High income countries have a collection rate of more than 90% (World Bank, 2012). A large part of the waste in cities is valuable fractions like recyclables collected by the informal sector. The remaining waste is the “uncollected” fraction which is often disposed of in illegal dump sites (in the form of scattered dumping or wild dumping) and open burning sites.

There is an increasing trend of uncontrolled burning for massive amounts of uncollected waste in developing countries as people believe that it is the least expensive, easiest means of reducing waste volumes and a way to eliminate garbage from their vicinity. However, these kinds of primary methods can no longer be accepted due to serious threats to the environment and local communities. BC and fossil fuel-based CO<sub>2</sub> emissions from open burning are causing considerable climate impact, as well as affecting public health by reducing ambient air quality.

44

In this tool, a separate worksheet has been designed to quantify the GHG/SLCP emissions from uncollected waste. In this sheet, the amount of uncollected waste and the composition of such waste will appear automatically based on the user input data in the key data sheet. If the user enters the uncollected waste composition in the 'user guide page', that composition data will appear here. If not, uncollected waste composition is considered to be similar to the composition of collected waste. The composition of uncollected waste is assumed to be similar in all scenarios. As for input data, the user should provide the percentage of uncollected waste openly burned and the percentage of uncollected waste openly dumped. These percentages might be approximate values based on general observation and experiences in waste management in the city. Unlike other technologies, fossil fuel does not require any operational or maintenance activities, therefore there are no GHG/SLCP emissions with respect operational activities.

CH<sub>4</sub> emissions from scattered/wild dumping of uncollected waste can be very low. Generally the height of the waste pile is very low and the majority of waste degrades aerobically. However, in this sheet it was assumed that emissions from open dumping of uncollected waste would be similar to emissions from unmanaged-shallow (<5m waste) dumpsites. The IPCC 2006 waste model is used to quantify the potential CH<sub>4</sub> emissions from open dumping of uncollected waste.

CH<sub>4</sub> emissions from open burning was estimated based on the emission factor In order to quantify the BC from open burning, emission factors published by Bond et al. (2013) were used (0.65 kg of BC/tonne of waste). In addition, the IPCC recommended Tier 2 approach was adapted to quantify fossil fuel-based CO<sub>2</sub> from open burning of textile, rubber, leather, plastic components (IPCC, 2006). As explained in IPCC guidelines, for open burning of waste, all the default values are similar to the incineration except the oxidation factor. In the open burning process, a higher fraction of waste oxidizes incompletely due to inefficiencies in the combustion process, so the IPCC recommended oxidation factor (OF) for open burning is 58%. Step-by-step procedure of calculating GHG/SLCP emissions from uncollected waste is shown in Box 9.

Box 9: Method of estimating GHG/SLCP emissions from uncollected waste

(i) GHG (e.g. CH<sub>4</sub>) emissions from open dumping

CH<sub>4</sub> emission from open dumping was estimated by using IPCC 2006 waste model. Detailed calculation procedure shown under landfilling sheet (see Box 7)

(ii) CH<sub>4</sub> emissions from open burning

$$Emissions_{CH_4} = EF(kg / tonne)$$

EF-Emission Factor of CH<sub>4</sub> during open burning (kg/tonne of waste) (emission factor given by Wiedinmyer et al, 2014)

iii) SLCPs (e.g. BC) emissions from waste burning (Emission factor given by Bond et al. 2013)

$$Emissions_{BC} = EF(kg / tonne)$$

EF-Emission Factor of BC from waste (kg/tonne of waste)

(iv) Quantify the GHGs (e.g. fossil based CO<sub>2</sub>) emissions from burning of waste

$$E = \sum_i (SW_i \times dm_i \times CF_i \times FCF_i \times OF_i) \times \frac{44}{12}$$

i - type of fossil based waste openly burned such as textiles, rubber and leather, plastics

E - Emissions (kg CO<sub>2</sub>/tonne of waste)

SW<sub>i</sub>-total amount of i<sup>th</sup> type of waste (wet weight) openly burned (kg/tonne of waste)

dm<sub>i</sub> - dry matter content in the waste (partially wet weight) openly burned

CF<sub>i</sub> -Fraction of Carbon in the dry matter (total carbon content), (fraction; 0.0-1.0)

FCF<sub>i</sub> - Fraction of Fossil Carbon in the total carbon, (fraction; 0.0-1.0)

OF<sub>i</sub> - oxidation factor ( 0-58%)

44/12 - conversion factor from C to CO<sub>2</sub>

(v) Net climate impact from all GHGs (except BC) is estimated as follow;

$$NetGHG_{(CO_2-eq/tonne)} = (CO_{2(net)} \times 1 + CH_4(biogenic)_{(net)} \times 28)$$

Net GHG emission – Estimated as tonnes of CO<sub>2</sub>-eq/tonne

Once the quantification is completed for fossil fuel-based CO<sub>2</sub>/BC emissions from open burning and CH<sub>4</sub> emissions from illegal dumping, these can be considered as gross GHG/SLCP emissions. Unlike other treatment methods, open burning and open dumping of uncollected waste has no possibility for avoidance of GHG/SLCP emissions through resource recovery. Therefore, net GHG/SLCP emissions would be equal to the gross GHG/SLCP emissions process. The print screen view of uncollected waste sheet is shown in Figure 18.

Key Data
Go to Transportation
Go to Composting
Go to Anaerobic digestion
Go to Recycling
Go to MBT
Go to Incineration
Go to Landfilling
Go to Open burning/landfill fire
Uncollected waste
Go to Summary

**GHG and SLCP emissions from uncollected waste: Open burning and Scattered dumping**

**Data Input**

Total amount of uncollected waste Tonnes/day

Composition of uncollected waste. If the user enter the uncollected waste composition in 'user guide page', such composition data will appear here. If not, uncollected waste composition considered be similar to the composition of collected waste. Composition of uncollected waste is same for all scenarios

Food waste	45.05
Garden waste	7.22
Plastics	10.56
Paper	8.61
Textile	1.61
Leather/rubber	0.44
Glass	2.34
Metal (aluminium + steel)	4.22
Nappies (disposable diapers)	0.00
Wood	0.00
Hazardous waste	19.95
Others	0.00
<b>Total</b>	<b>100.00</b>

% uncollected waste openly burned 50

% uncollected waste openly dumped 50

**Output:** CH<sub>4</sub> emissions from scattered dumping of uncollected waste can be very low as the height of waste pile is low and waste will be degraded aerobically. However, in this sheet it was assumed that emissions from open dumping of uncollected waste would be similar to emissions from unmanaged or shallow (<5m waste) dumpsites.

**User input is required in green cells \***

BAU	Scenario 1	Scenario 2	Scenario 3	Scenario 4
21580.0	21580	21580	21580	0

**Results: Summary of the emissions**

Show Graph
Print Sheet

Category	Type of emissions	Emission/avoidance potential	Phase/activity	Emissions from open dumping and open burning (kg/tonne of uncollected waste)				
				BAU	Scenario 1	Scenario 2	Scenario 3	Scenario 4
	CH <sub>4</sub>	CH <sub>4</sub> biogenic-Direct	From waste degradation-open dumping	8.02	8.02	8.02	8.02	0.00
		CH <sub>4</sub> biogenic-Direct	From partially burned waste	1.85	1.85	1.85	1.85	0.00
		Net emissions		9.87	9.87	9.87	9.87	0.00
SLCPs	BC	Direct Emissions	From waste burning	0.33	0.33	0.33	0.33	0.00
Other GHGs	CO <sub>2</sub>	Direct Emissions (fossil)	From waste burning	86.49	86.49	86.49	86.49	0.00
Net impact		Net BC emissions (kg of BC/tonne of uncollected waste)		0.33	0.33	0.33	0.33	0.00
		Net climate impact of GHGs (kg of CO <sub>2</sub> -eq/tonne of uncollected waste)		362.89	362.89	362.89	362.89	0.00

AD
Recycling
MBT
Incineration
Mix waste landfilling
Open burning and landfill fire
Uncollected waste
Summary
User guide
Figures

Figure 18: Print screen view of uncollected waste sheet

## 2.5 Summary of GHG/SLCP emissions

An individual worksheet has been designed to estimate the technology specific emissions from each type of waste management option in consideration of their entire life cycle. It is preferable for users to have several technologies in their BAU or intended scenarios. Therefore, this tool facilitates showing the aggregated climate effect of each scenario for users to compare systems (scenarios) and choose the most climate-friendly technologies for their city. The summary sheet has been designed to indicate the overall results of the estimations in the form of a summary. Users are requested to refer to the summary sheet once they enter all the required data in the individual sheets in order to compare scenarios and make decisions on most climate friendly waste management options.

The first table in the summary sheet shows the mass balance of the generated waste with respect to each scenario. Users can compare the summary of total waste generation, total collected and treated waste by the city, collected and treated waste by informal sector, total uncollected waste (scattered/wild dumping waste) with respect to different scenarios that they have chosen to compare. If a considerable amount of waste is being uncollected, an automatic message will appear to remind the user that their city needs to implement a proper plan to improve their management practices and address the uncollected waste.

The second table shows the net emissions from individual treatment technologies under the different scenarios. Net GHG/SLCP emissions from individual treatment methods are shown in “kg/tonne”. Units in “kg” are used here in order to show the magnitude of small amounts of emissions such as BC. In addition the climate impact from per tonne generated waste is calculated for an integrated system whereas the net GHG/SLCP emissions from individual technologies have been further aggregated. Aggregated net GHG/SLCP emissions from each scenario have been calculated as “kg of each GHG/SLCP (e.g. CH<sub>4</sub>, BC, CO<sub>2</sub>, N<sub>2</sub>O) emissions per tonne of generated waste”. However, user must be interested to measure the emissions for different unit. Therefore to measure the accumulated emissions from each scenario, an option has given to the user to change the unit of measurements based on their preferences. The tool facilitates to measure the climate impact of each scenario for four types of functional units given below.

1. Emissions per tonne of generate waste
2. Emissions per tonne of collected waste
3. Emissions from yearly generated waste
4. Emissions from yearly collected waste

User can change the functional unit in the dropdown list and estimate the emissions for any of the unit listed above based on their interest and effectiveness for policy making process. In the summery sheet, aggregated impact from different technologies has been presented with respect to BAU practice and intended scenarios. The following approach has been used to quantify the aggregated net emissions in each scenario.

Net GHGs/SLCP emissions from the integrated system (tonnes/per tonne of generated waste) =

$$\begin{aligned} & \text{Net GHG/SLCP emissions from waste transportation (kg/per tonne of waste)} + \text{Net GHG/SLCP emissions from composting (kg /per tonne of organic waste)} \times \text{Fraction of generated waste use for composting} \\ & + \text{Net GHG/SLCP emissions from AD (kg /per tonne of organic waste)} \times \text{Fraction of generated waste use for AD} + \text{Net GHG/SLCP emissions from recycling (kg /per tonne of recyclables)} \times \text{Fraction of generated waste use for recycling} \\ & + \text{Net GHG/SLCP emissions from MBT (kg/tonne of mixed waste)} \times \text{Fraction of generated waste use for MBT} + \text{Net GHG/SLCP emissions from incineration (kg /tonne of mixed waste)} \times \text{Fraction of generated waste use for incineration} \\ & + \text{Net GHG/SLCP emissions from landfilling (kg/tonne of mixed waste)} \times \text{Fraction of generated waste use for landfilling} + \text{Net GHG/SLCP emissions from uncollected waste (kg /per tonne of uncollected waste)} \times \text{Fraction of generated waste remained as uncollected} \end{aligned}$$

Net BC emissions per tonne of generated/collected waste in each scenario are shown in a separate row as they are one of the major SLCPs that this tool aims to quantify. With the exception of BC, net emissions of other gases have been aggregated as CO<sub>2</sub>-eq considering the Global Warming Potential (GWP) values of CO<sub>2</sub>, CH<sub>4</sub>, N<sub>2</sub>O (see Figure 19). The aggregated net climate impact from each scenario can be used to compare BAU practices with other intended scenarios to select the most optimal waste management option for climate change mitigation. It should be noted that

GWP value of BC has not been finalised yet by the recognised body (e.g. IPCC) and therefore, net BC emissions from each scenario are shown separately. For comparison purposes, net climate impact from BC and other GHGs are shown graphically, as can be seen in Figure 20. All in all, by comparing the magnitude of net BC emissions and other GHGs emissions, users can choose the most climate-friendly waste management option for the city.

Please choose the preferred 'Unit' for emissions estimation Calculate emissions from yearly generated waste

Summary of net GHG/SLCP emissions from waste management

Description	Technology	Unit	BAU				Scenario 1				Scenario 2			
			CH <sub>4</sub>	BC	CO <sub>2</sub>	N <sub>2</sub> O	CH <sub>4</sub>	BC	CO <sub>2</sub>	N <sub>2</sub> O	CH <sub>4</sub>	BC	CO <sub>2</sub>	N <sub>2</sub> O
Waste collection and transportation by the city	Transportation	kg/tonne (unit 'kg' used here to show the magnitude of small amount of emissions)	0.000	0.003	3.362	0.000	0.000	0.001	3.026	0.000	0.000	0.001	3.026	0.000
Treatment for separated waste	Composting						3.999	0.001	-0.360	0.282	3.999	0.001	-0.360	0.282
	Anaerobic digestion													
	Recycling						-0.011	-0.017	-1,314.173	-0.003	-0.011	-0.017	-1,314.173	-0.003
Treatment for mixed waste	MBT													
	Incineration													
	Landfilling		37.515	0.000	0.000	0.000	28.879	0.000	0.000	0.000	28.879	0.000	0.000	0.000
Uncollected waste	Open burning/scattered dumping		3.700	0.650	172.982									
GHGs/SLCPs emission per tonne of generated waste:		kg/tonne	9.871	0.325	86.491		8.021	0.325	86.491		8.021	0.325	86.491	
BC emissions from yearly generated waste:		Tonnes		8,321.93				2,559.72				2,559.72		
Climate impact from GHGs emissions from yearly generated waste:		Tonnes of CO <sub>2</sub> -eq		11,509,868.49				8,376,236.23				8,376,236.23		

Figure 19: Print screen view of summary table of GHGs/SLCPs



Figure 20: Print screen view of summary sheet



### 3.0 Suggestions and possible improvements

Most cities in developing Asia are not very familiar with the importance of accurate data collection and procedures on systematic data recording. Some guidance has been provided in the user manual but it may not be fully sufficient. Therefore, training sessions should be planned for city officials on how to collect and record accurate data at the city level.

In this tool the IPCC waste model has been used to estimate the emissions from landfill technologies. This IPCC waste model would be sufficient to compare the scenarios on the CH<sub>4</sub> emissions potential from landfilling technologies considering the entire life cycle (e.g. 100 years) for decision-making purposes. If the city is interested in a more accurate estimation for the purpose of applying to the carbon market (e.g. CDM), more specific landfill models like methodologies recommended by the UNFCCC can be used.

There are a lot of ongoing research on effect of BC on climate change and more reliable emission factors will be published in the future. The emission factor of BC needs to be updated when more reliable data is available. If GWP values of BC are recommended by a recognized body such as the IPCC, climate impact from BC should be aggregated in terms of CO<sub>2</sub>-eq for facilitating a smooth decision-making process.

### References

- Arena, U., Mastellone, M.L. and Perugini, F. 2003. The environmental performance of alternative solid waste management options: a life cycle assessment study. *Chemical Engineering Journal*, 96; 207–222.
- Astrup, T., Møller, J. and Fruergaard, T. 2009. Incineration and co-combustion of waste: accounting of greenhouse gases and global warming contributions. *Waste Management & Research*, 27: 789–799.
- Bond et al., 2013. Bounding the role of black carbon in the climate system: A scientific assessment. In: *Journal of Geophysical Research: Atmospheres*, Vol. 118, 5380–5552, doi: 10.1002/jgrd.50171, 2013
- Bovea, M.D., Ibáñez-Forés, V., Gallardo, A. and Colomer-Mendoza, F.J. 2010. Environmental assessment of alternative municipal solid waste management strategies. A Spanish case study. *Waste Management*, 30; 2383–2395.
- Brentrup, F. and Brentrup, F. 2008. Energy efficiency and greenhouse gas emissions in European nitrogen fertilizer production and use. Avenue E. van Nieuwenhuyse 4/6 B-1160, Brussels, Belgium.

Charles H. K., Lam, A. W. M. I., Barford, J.P. and McKay, G. 2010. Use of Incineration MSW Ash: A Review. Sustainability, 2: 1943-1968.

Cherubini, F., Bargigli, S. and Ulgiati, S. 2008. Life cycle assessment (LCA) of waste management strategies; Landfilling, sorting plant and incineration. Energy, 34 (12), 2116-2123.

Conestoga-Rovers & Associates (CRA), 2010. Landfill gas management facilities design guidelines, Richmond, British Columbia. Available in <http://www.env.gov.bc.ca/epd/mun-waste/waste-solid/landfills/pdf/Design-guidelines-final.pdf>

DEFRA, 2013. Incineration of Municipal solid waste. Department for environment, food and rural affairs. Available in [https://www.gov.uk/government/uploads/system/uploads/attachment\\_data/file/221036/pb13889-incineration-municipal-waste.pdf](https://www.gov.uk/government/uploads/system/uploads/attachment_data/file/221036/pb13889-incineration-municipal-waste.pdf)

Diaz, R. and Warith, M. 2006. Life-cycle assessment of municipal solid wastes: Development of the WASTED model. Waste Management, 26; 886–901.

Ecometrica, 2011. Electricity specific emission factor. Available in <http://ecometrica.com/assets/Electricity-specific-emission-factors-for-grid-electricity.pdf>.

EMEP/EEA air pollutant emission inventory guidebook, 2016. Paper and pulp industry. Technical guidance to prepare national emission. ISSN 1977-8449. Available in <http://efdb.apps.eea.europa.eu>

European Aluminium Industry, 2013. Available in <http://european-aluminium.eu/media/1329/environmental-profile-report-for-the-european-aluminium-industry.pdf>

IFEU, 2009. SWM-GHG calculator. Available in <http://www.ifeu.org/english/index.php?bereich=abf&seite=klimarechner>

IGES, 2014. CDM Project Database Available at: <http://www.iges.or.jp/en/cdm/report.html>

IPCC, 2006 (a). Guidelines for National Greenhouse Gas Inventories, Prepared by the National Greenhouse Gas Inventories Programme. Eggleston, H.S., Buendia, L., Miwa, K., Ngara, T., Tanabe, K. (Eds.). Published: IGES, Japan.

IPCC, 2006 (b). Incineration and Open Burning of Waste. Available in [http://www.ipcc-nggip.iges.or.jp/public/2006gl/pdf/5\\_Volume5/V5\\_5\\_Ch5\\_IOB.pdf](http://www.ipcc-nggip.iges.or.jp/public/2006gl/pdf/5_Volume5/V5_5_Ch5_IOB.pdf)

IPCC, 2006 (c). Waste generation, composition and management data. Available in [http://www.ipcc-nggip.iges.or.jp/public/2006gl/pdf/5\\_Volume5/V5\\_2\\_Ch2\\_Waste\\_Data.pdf](http://www.ipcc-nggip.iges.or.jp/public/2006gl/pdf/5_Volume5/V5_2_Ch2_Waste_Data.pdf)

IPCC, 2006 (d). Energy, 2006 IPCC guidelines. Available in <https://www.ipcc.ch/meetings/session25/doc4a4b/vol2.pdf>

IPCC, 2007. Contribution of Working Group III to the Fourth Assessment Report of the Intergovernmental Panel on Climate Change. B. Metz, O.R. Davidson, P.R. Bosch, R. Dave, L.A. Meyer (eds) Cambridge University Press, Cambridge, United Kingdom and New York, USA.

IPCC, 2014. Good Practice Guidance for Land Use, Land-Use Change and Forestry. Available in [http://www.ipccnggip.iges.or.jp/public/gpglulucf/gpglulucf\\_files/Glossary\\_Acronyms\\_BasicInfo/Glossary.pdf](http://www.ipccnggip.iges.or.jp/public/gpglulucf/gpglulucf_files/Glossary_Acronyms_BasicInfo/Glossary.pdf)

IPCC. 2013. Climate Change 2013. The Physical Science Basis. Contribution of Working Group 1 to the Fifth Assessment Report of the Intergovernmental Panel on Climate Change. [Stocker, T.F., D. Qin, G.K. Plattner, M. Tignor, S.K. Allen, J. Boschung, A. Nauels, Y. Xia, V. Bex and P.M. Midgley (eds.)]. Cambridge University Press, Cambridge, United Kingdom and New York, NY, USA, 1535 pp.

Kool, A., Marinussen, M. and Blonk, H. 2012. GHG Emissions of N, P and K fertilizer production, Blonk Consultants. Available in [http://blonkconsultants.nl/upload/pdf/PDV%20rapporten/fertilizer\\_production%20D03.pdf](http://blonkconsultants.nl/upload/pdf/PDV%20rapporten/fertilizer_production%20D03.pdf)

Manfredi S., Tonini. D., Christensen, T.H. and Scharff, H. 2009. Landfilling of waste: accounting of greenhouse gases and global warming contributions. Waste Management & Research, 27: 825–836.

Mendes, M. R., Aramaki, T. and Hanaki, K. 2004. Comparison of the environmental impact of incineration and landfilling in São Paulo City as determined by LCA. Resources, Conservation and Recycling, 41, 47–63.

Menikpura S.N.M., Gheewala, S.H. and Bonnet, S. 2012. Evaluation of the effect of recycling on sustainability of municipal solid waste management in Thailand. Waste and Biomass Valorisation Journal, 4(2), 237-257.

Møller J., Boldrin A. and Christensen, T.H. 2009. Anaerobic digestion and digestate use: accounting of greenhouse gases and global warming contribution. Waste Management Research, 27(8):813-24.

Ostrem, K. 2004. Greening waste: anaerobic digestion for treating the organic fraction of municipal solid wastes. Earth Engineering Centre, University of Colombia. Available in [http://www.wtert.gr/Pdfs/anaerobic\\_digestion\\_Ostrem\\_Thesis.pdf](http://www.wtert.gr/Pdfs/anaerobic_digestion_Ostrem_Thesis.pdf)

Patyk, A. 1996. Balance of Energy Consumption and Emissions of Fertilizer Production and Supply. Reprints from the International Conference of Life Cycle Assessment in Agriculture, Food

and Non-Food Agro-Industry and Forestry: Achievements and Prospects, Brussels, Belgium, 4-5 April 1996.

Pitsanulok Municipality, 2012. Personal communication with Phistanulok Municipality, Thailand

Rx3 rethink recycle remake, 2012. Life Cycle Assessment of Irish compost production and agricultural use. Available in <http://www.cre.ie/web/wp-content/uploads/2010/12/Compost-Life-Cycle.pdf>

Staffell, I. 2011. The Energy and Fuel Data Sheet. University of Birmingham. Available in [http://wogone.com/science/the\\_energy\\_and\\_fuel\\_data\\_sheet.pdf](http://wogone.com/science/the_energy_and_fuel_data_sheet.pdf)

The World Bank, 2012. What a Waste: A Global Review of Waste Management. Available in [www.worldbank.org/urban](http://www.worldbank.org/urban).

UNFCCC, 2006. Clean Development Mechanism, Project Dosing Document Form. Available in <http://cdm.unfccc.int/Projects/DB/DNV-CUK1194442031.0/view>

UNFCCC, 2012. Indicative simplified baseline and monitoring methodologies for selected small-scale CDM project activity categories. Recovery and recycling of materials from E-waste. Available in <https://cdm.unfccc.int>

UNFCCC. 2012. Recycling and virgin production of plastic. Available in [https://cdm.unfccc.int/Panels/ssc\\_wg/meetings/039/ssc\\_039\\_an04.pdf](https://cdm.unfccc.int/Panels/ssc_wg/meetings/039/ssc_039_an04.pdf)

Warinchamrap Municipality, 2012. Personal communication with Warinchamrap Municipality, Thailand

World Aluminium, 2010. Available in [http://www.world-aluminium.org/media/filer\\_public/2013/10/17/2010\\_life\\_cycle\\_inventory\\_report.pdf](http://www.world-aluminium.org/media/filer_public/2013/10/17/2010_life_cycle_inventory_report.pdf)

World Bank, 2013. Country and Lending Groups. Available in <http://data.worldbank.org/about/country-and-lending-groups>

World Steel Association, 2011. Methodology report. Life cycle inventory study for steel products. Available in <https://www.worldsteel.org/en/dam/jcr:6a222ba2-e35a-4126-83ab-5ae5a79e6e46/LCA+Methodology+Report.pdf>

WRAP, 2009. Anaerobic digestate. Available in [http://www.organicsrecycling.org.uk/uploads/category1060/Financial\\_impact\\_assessment\\_for\\_a\\_naerobic\\_digestate.pdf](http://www.organicsrecycling.org.uk/uploads/category1060/Financial_impact_assessment_for_a_naerobic_digestate.pdf)