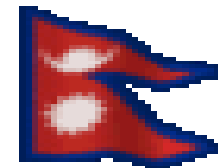




Government of Nepal  
**Ministry of Forests and Environment**



# Regulatory, Institutional and Financial Framework of Waste Management in Nepal

**15-16 July 2019, Bangladesh**

**Ms. Anuradha Gyawali**

**Section Officer/Chemist**

**Environment Standard and Monitoring Section**



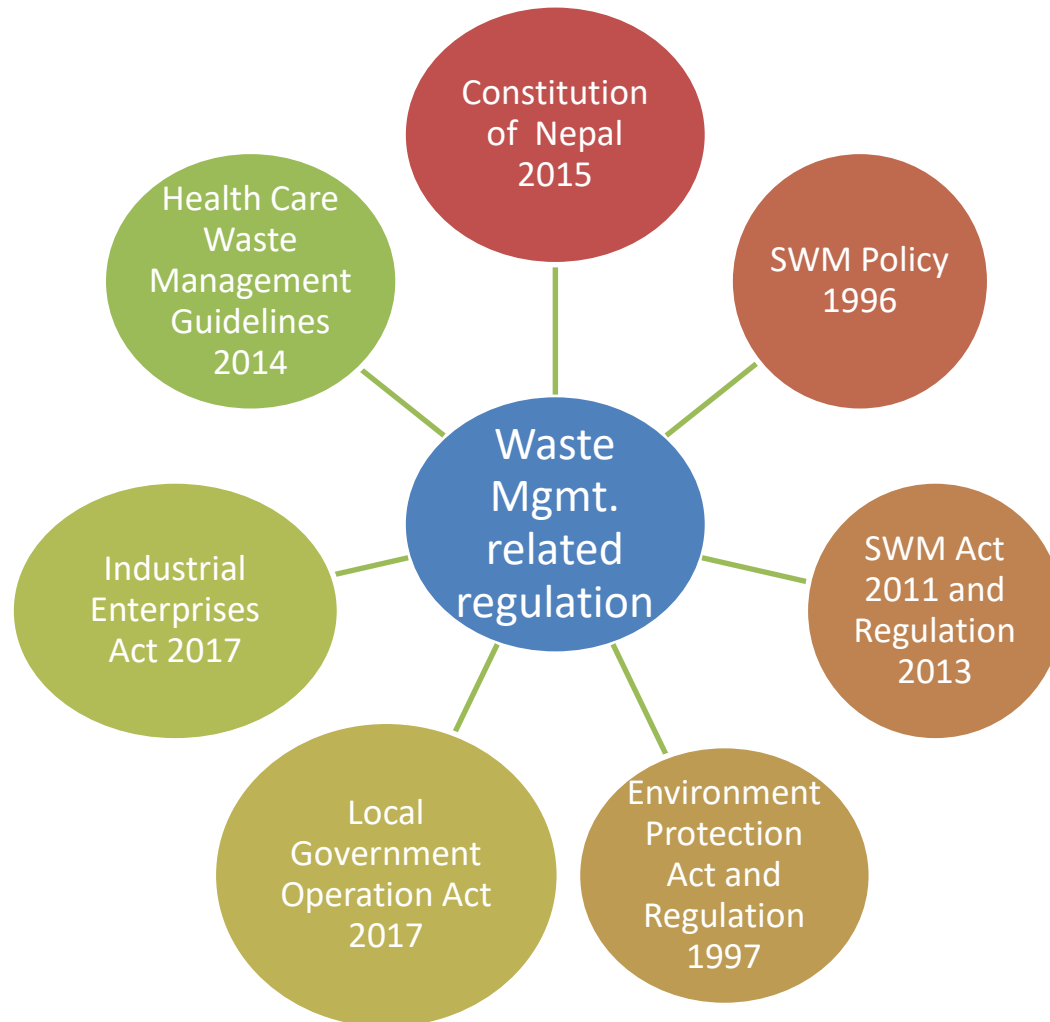
# Background

- ✓ Nepal recently shifted from unitary to federal System of Government- Central , Provincial and Local Government
- ✓ Nepal is at the reformation stage preparing necessary Law, legislation/bill at central, provincial and local level

| Geographical Division              | No.      |
|------------------------------------|----------|
| Provinces                          | 7        |
| District                           | 77       |
| Metropolitan City                  | 6        |
| Sub Metropolitan City              | 11       |
| Municipality                       | 276      |
| Rural Municipality                 | 460      |
| Total Population (CBS ,2019.03.21) | 29509567 |
| Urban Population                   | 62.4%    |
| Rural Population                   | 37.6 %   |

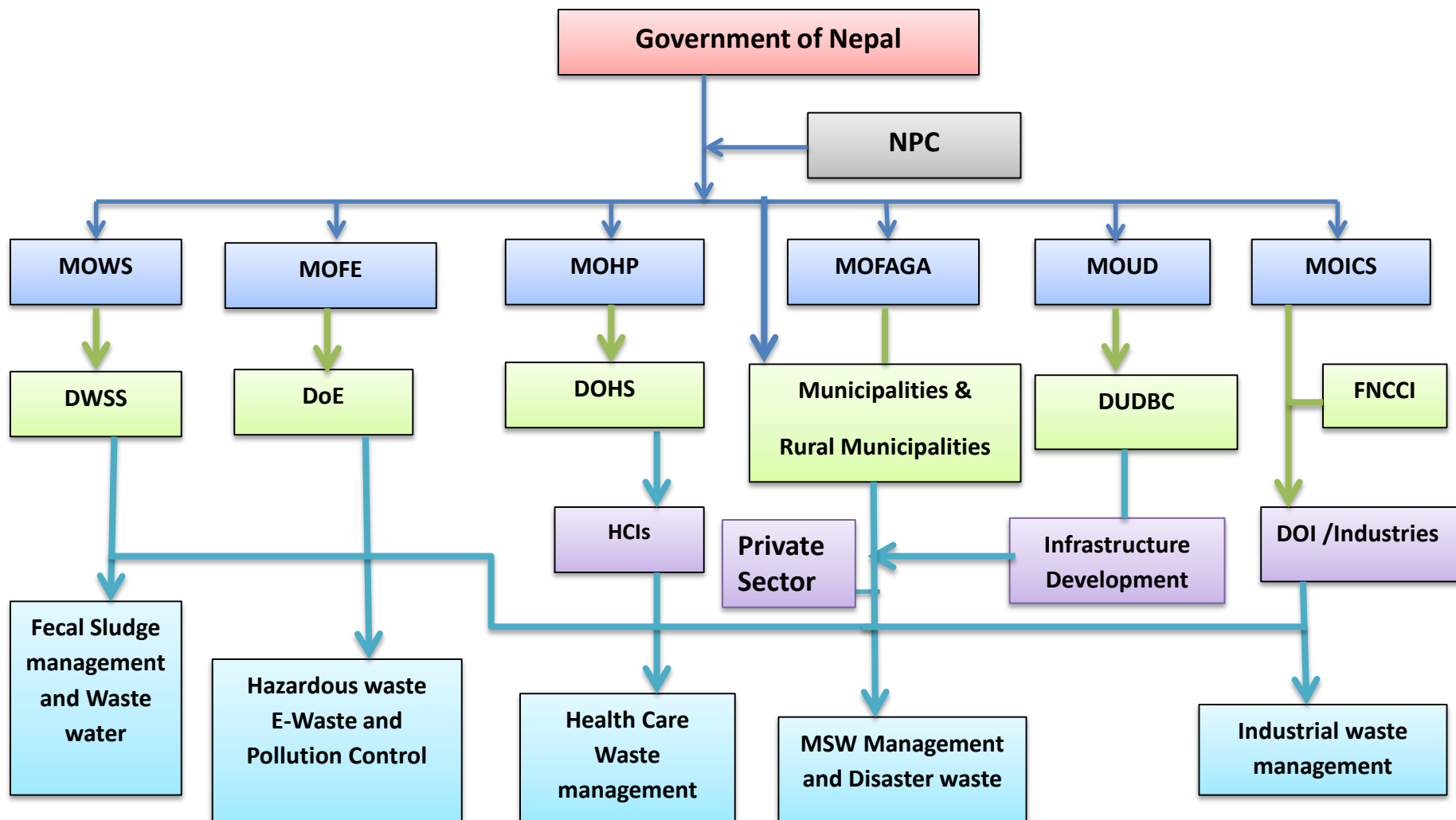


# Regulatory Framework of SWM in Nepal



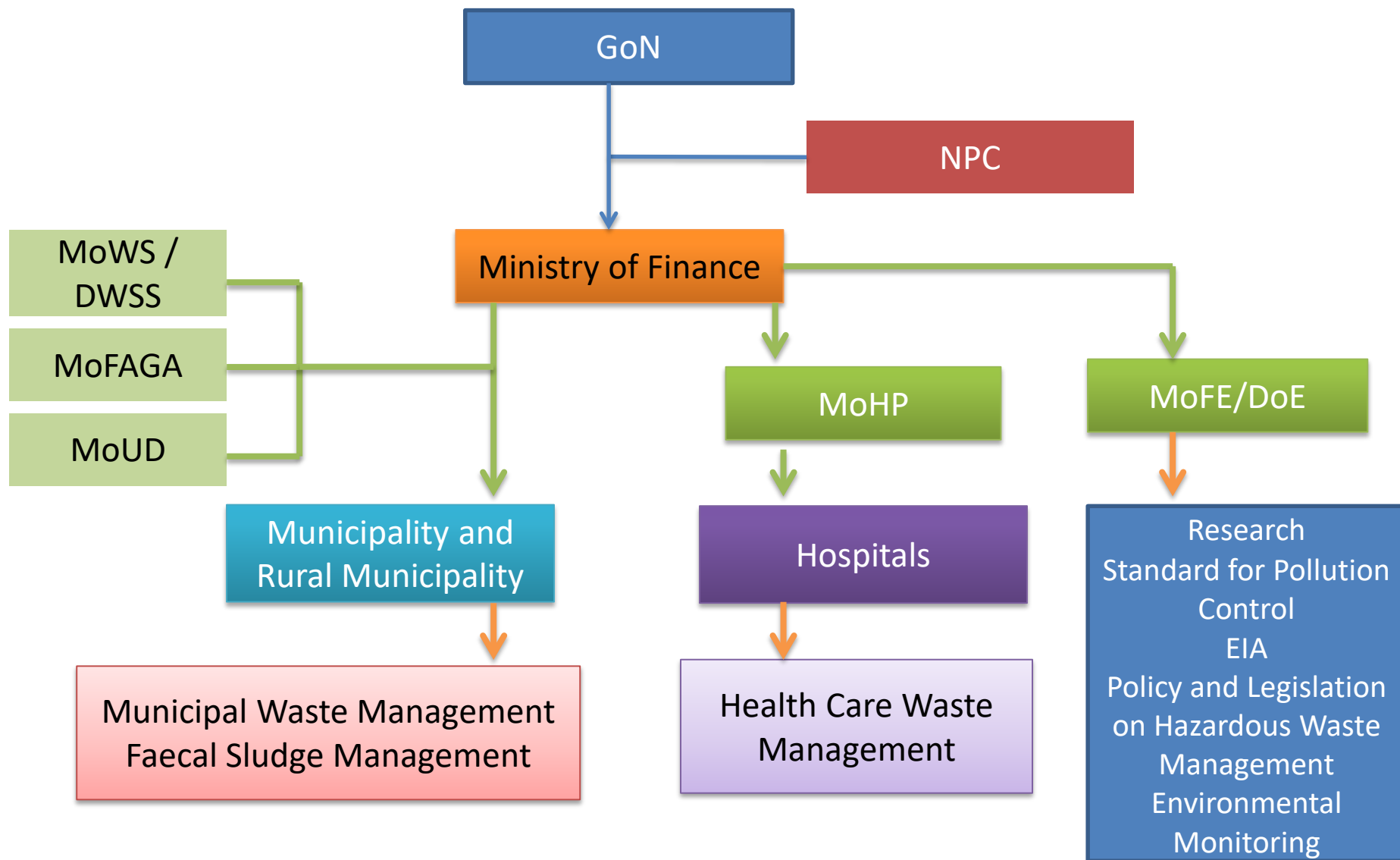


# Institutional Framework of SWM in Nepal





# Financial Framework for SWM in Nepal





# Investment and Operational Cost of some of municipalities

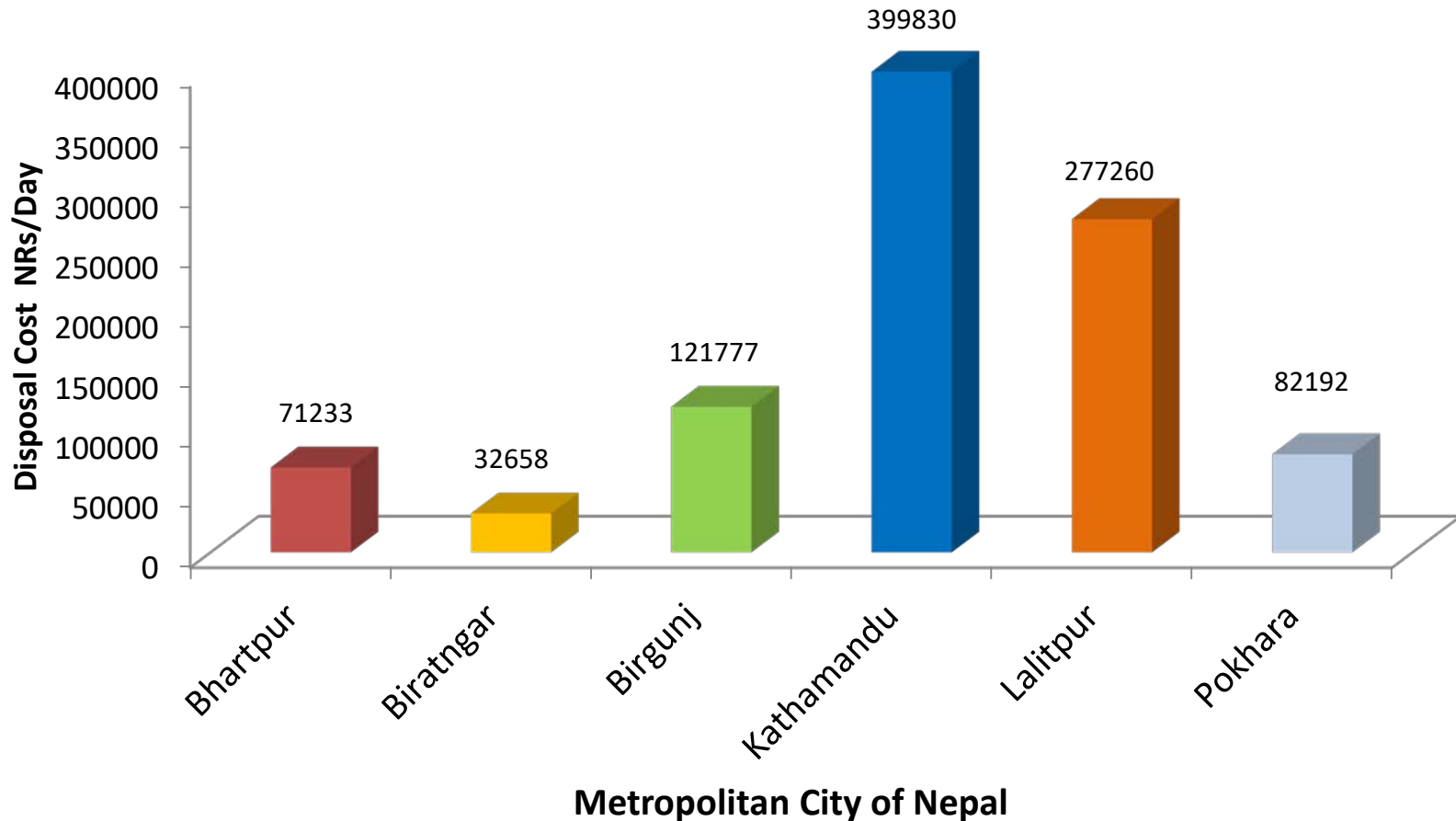
- High Investment Municipality with Annual Expenditure over 10% of its Budget: Dhankuta municipality
- Medium Investment Municipality with Annual Expenditure between 5 over 10% of its Budget: Janakpur, Ghorahi municipalities
- Low Investment Municipality with Annual Expenditure between 0.5 over 4.9% of its Budget”: Ilam, Damak, Dhulikhel Bhimeshwor, Baglung, Tansen Tulsipur Birendranagar, Dhangadhi Bhimdatta Municipalities
- “Negligible Investment” Municipality with Annual Expenditure less than 0.4% of Budget”: Tikapur municipalities

( Source : SWMTSC/MoFAGA, 2017)



# Disposal Cost of Municipality of Nepal

- Average municipality waste disposal cost = NRs.26,533/day ( 2016/2017) ( environmental statistic of Nepal, CBS, 2019)





## Private Sectors Participation (PSP) in Nepal

- Private sector participation in Municipal SWM of various municipalities of Nepal are growing rapidly in last 5 years . But there is no exact data on PSP in Nepal as there is no any study conducted till date.
- According to SWMA-Nepal 2018, there are about 60 private sectors working in the various municipalities of Kathmandu Valley service covering up to 50 - 60%. Employers working directly under PSP = 2500; Annual Transaction of PSP in KV = NRs. 910 million
- Besides, there are several private sectors working in recycling business all over Nepal that transacted billions of money where municipalities hardly take any attention to it . There is no any national level study on it





## Foreign Aid

- UNEP, UN-Habitat, EU, GIZ, JICA, ADB, World Bank, WHO, China, India, Finland etc. have contributed in SWM activities of Nepal.
- Currently ADB is supporting various municipalities for Integrated Urban Development Project (IUDP) under DUDBC/MoUD.



# **Thank you**

Anuradha Gyawali

[anunprl@gmail.com](mailto:anunprl@gmail.com)

Government of Nepal

Ministry of Forests and Environment